



SEETRONIC Product Catalogue 2024

2024 **SEETRONIC**

SEETRONIC

SEETRONIC

US Distributor:
Techni-Lux, Inc, 10900 Palmbay Drive, Orlando, FL 32824

T: +1 407 857 8770
F: +1 407 857 8771
E: sales@techni-lux.com

www.techni-lux.com
©2024 All Rights Reserved

Ideas for Connection

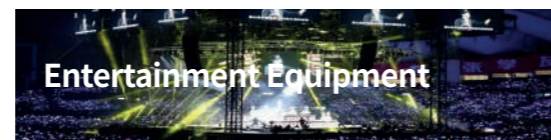
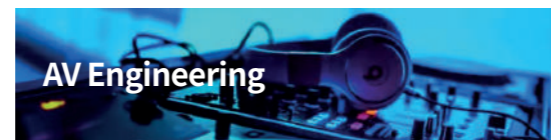


About SEETRONIC

Products



Industry Applications



SEETRONIC is a national high-tech enterprise integrating R&D, production and sales of connected equipment systems in the fields of audio, video, lighting, automation and communication. The company covers an area of 18,000 square meters, with more than 260 employees and an annual output of more than 20 million connectors.

The company adheres to technological innovation, and after years of accumulation, the company has more than 70 independent intellectual property rights in the technical fields of signal control, power supply, data connector molding and mechanical structure, TUV and so on.

Our products have passed VDE, CUL, CQC, RoHS, REACH and other certifications. We always continue to aim the most cutting-edge technology in the fields of audio, video, lighting, power and data application.



DUBAI EXPO 2020

As a world-class exhibition event, the Expo 2020 in Dubai provides an important opportunity to enter the world stage and show Seetronic strength and win recognition and attention.

The world's cutting-edge technology has gathered together to create a beautiful and magical pavilion building. The beautiful light and shadow have injected its soul into it and this sci-fi feast will surely become the muse of inspiration for countless designers.

The light and shadow show at the Dubai World Expo witnessed the visual shock of the world's top designers using light and shadow to turn "science fiction" into reality! This is all possible with the support of SEETRONIC products.

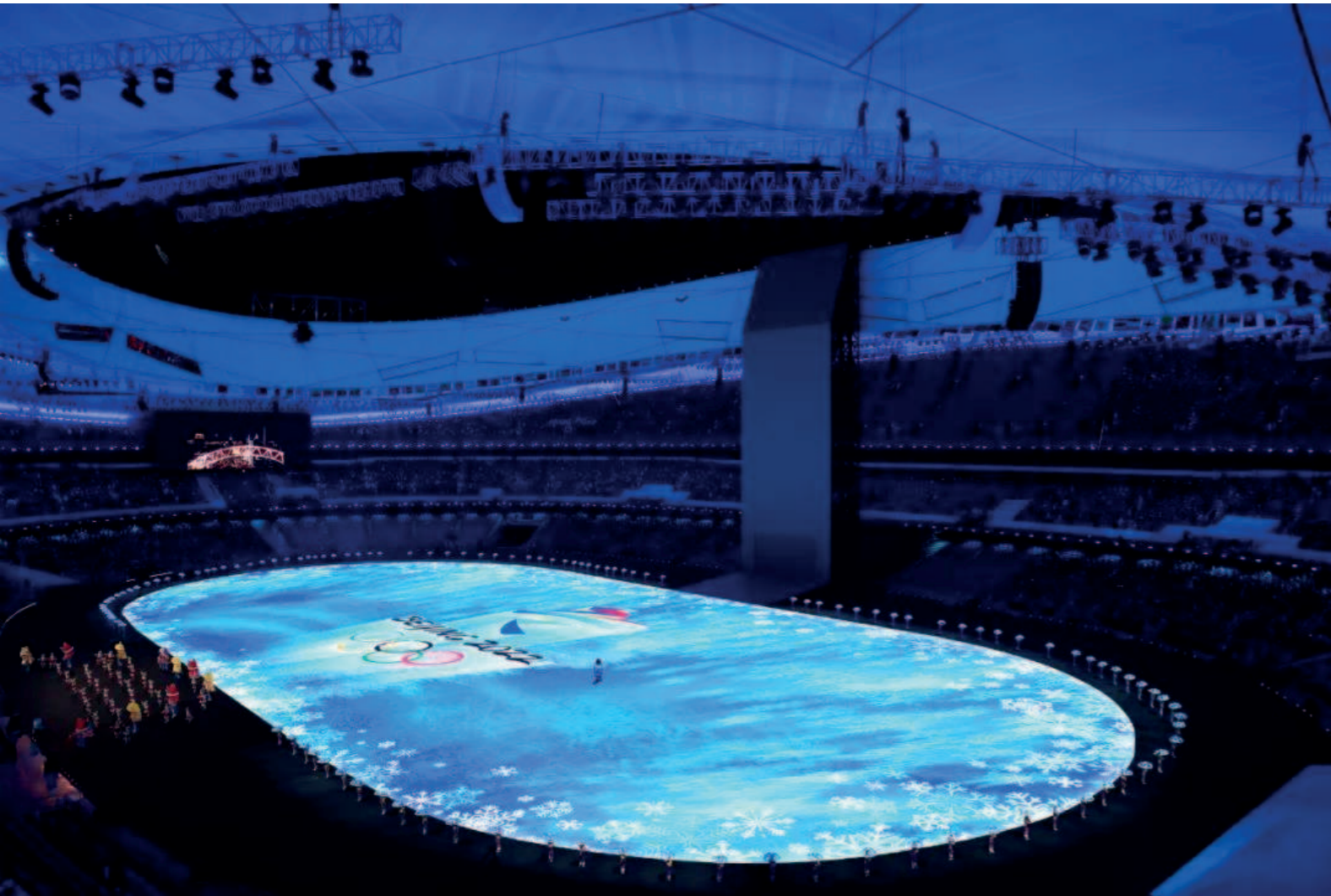


QATAR WORLD CUP 2022

The excitement of the 2022 World Cup in Qatar has sparked high emotions among fans around the world. At the beginning of the preparation for the event, the host country of Qatar spent 220 billion US dollars on the infrastructure in order to establish a good national image. As a key component of smart cities and smart stadiums, LED screens of different sizes and functions are widely used in stadiums and urban construction and Chinese companies have "provoked" the "beam" of LED screen supply.

And thus, SEETRONIC have provided these LED screens with high-performance products to protect this event.





BEIJING WINTER OLYMPICS 2022

The Beijing 2022 Winter Olympics LED has a total display area of 11,626 square meters with a ground screen of 155.6 meters long and 75.8 meters wide, and an icefall area of 57 meters high and 20 meters wide. The resolution of the ground screen alone has reached 14880x7248, with a total resolution of more than 16K, and the ground screen and the icefall area together form the world's largest LED three-dimensional stage.

A total of 140,000 sets of SEETRONIC signal connectors and power connectors were used for the Winter Olympics. SEETRONIC signal as well as the power connector provide stable support for the display.



HANGZHOU ASIAN GAMES 2023

The 19th Asian Games in Hangzhou (referred to as the "Hangzhou Asian Games") was grandly opened at the Hangzhou Olympic Sports Center Stadium also called Big Lotus! This is the third time that China has hosted the highest-level international multi-sport event in Asia after the 1990 Beijing Asian Games and the 2010 Guangzhou Asian Games.

As a well-known lighting and display supporting enterprise in China, Ningbo Seetronic Electronic Technology Co., Ltd. is fortunate to become the supplier of overall solutions for the display screen connectors and supporting wires for momentous event. Seetronic provided stable support with excellent technical strength and professional services and helping the event to show a beautiful national style feast to the world.



CONTENTS

RJ45 Connectors

- 01 Series 02
- 02 Series IP65 (Outdoor) 06
- 05 Series IP65 (Outdoor) 11

Power Connectors

- X Series IP67 18
- Indoor Series 21
- NW Series IP65 (Outdoor) 23
- X Series IP65 (Outdoor) 25
- G Series IP65 (Outdoor) 28

XLR Connectors

- W Series IP67 32
- H Series 35
- M Series 36
- S Series 37
- XLR Sockets 38
- Combined Sockets 41
- W Series IP65 (Outdoor) 42

Optical Fiber Connectors

- Plugs & Sockets 45
- Assembled Optical Fiber Cables 46

Loudspeaker Connectors

- Plugs & Sockets 48

Plugs & Jacks | RCA Connectors

- 1/4 Plugs & Jacks 51
- 3.5mm Plugs & Jacks 52
- RCA Cables & Sockets 54

BNC Connectors

- 75Ω UHD 56
- 75Ω HD 58

Data Connectors

- USB & HDMI 60

Adapters

- Metal Adapters 62
- Plastic Adapters 64



Features

- Ideal for any harsh and demanding environment and suitable for most RJ45 chassis connectors in the market
- Sturdy die-cast shell and unique cable clamp, cable connector carrier which does not include RJ45 plug, transmission class CAT5e
- Sleek design protects Ethernet connections in most commercial applications and components of standard RJ45 plug



● SE8MC-1-NEW



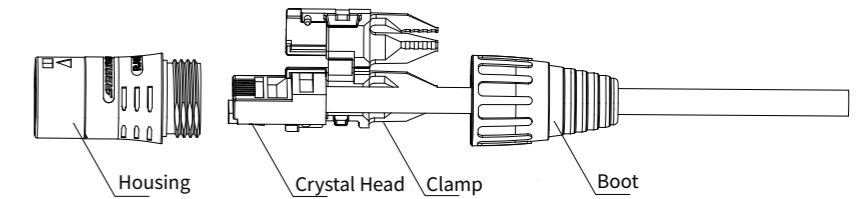
● SE8MC-B-1-NEW



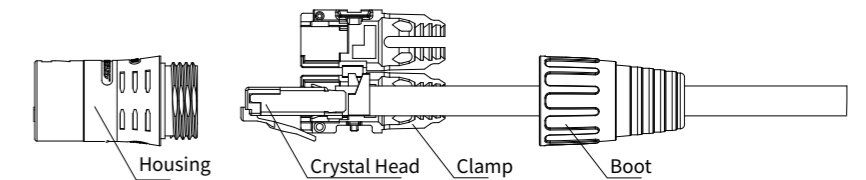
● SE8MC-1-30-LOD



● SE8MC-1-32



● SE8MC-1-NEW (Section Parts)



● SE8MC-1-30-LOD (Section Parts)

(Service life)	> 1000 mating cycles
(Insertion force)	≤ 20 N
(Wiring)	5-7mm
(Locking device)	latch lock
(Boot)	Polyamide
(Shell)	Zinc diecast
(Shell plating)	Pearl Cr
(Temperature range)	-30°C to +80°C

Product Model	Description
SE8MC-1-NEW	01 series cable carrier plug , chrome housing, cable OD 5-7mm
SE8MC-B-1-NEW	01 series cable carrier plug, black housing, cable OD 5-7mm
SE8MC-1-30-LOD	01 series cable carrier plug, chrome housing, large cable OD 7.5-9mm that suits large normal and dovetail type crystal head
SE8MC-1-32	01 series cable carrier plug, chrome housing, large cable OD 5-7.5mm that suits normal and dovetail type crystal head.



● SE8FDNH-13

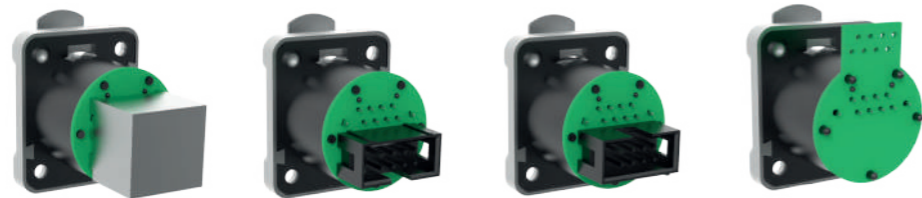


● SE8FDNH-24

● SE8FDNH-42

● SE8FDNV-06

● SE8FDNV-11



● SE8FDNV-27

● SE8FDNV-29

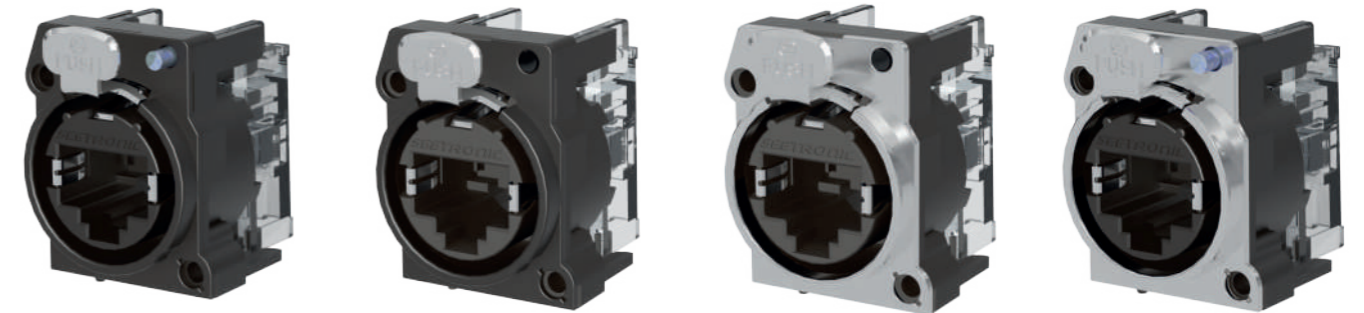
● SE8FDNV-30

● SE8FDNS-12

Features

- Complies with TIA/EIA 568B and ISO/IEC 11801 and compatible with transmission class CAT5e
- Mountable on the front of the panel

Product Model	Description
SE8FDNH-13	RJ45 D-shape panel connector, uniform metal flange, feed-through
SE8FDNH-24	RJ45 D-shape panel connector, uniform metal flange, single row wire-bonded PCB
SE8FDNH-42	RJ45 D-shape panel connector, uniform metal flange, wire-bonded PCB
SE8FDNV-06	RJ45 D-shape panel connector, uniform metal flange, 90° 8-pin horn, bottom opposite opening
SE8FDNV-11	RJ45 D-shape panel connector, uniform metal flange, 90°, upward opening
SE8FDNV-27	RJ45 D-shape panel connector, uniform metal flange, 90°, downward opening
SE8FDNV-29	RJ45 D-shape panel connector, uniform metal flange, feed-through 8-pin horn, downward opening
SE8FDNV-30	RJ45 D-shape panel connector, uniform metal flange, feed-through 8-pin horn, upward opening
SE8FDNS-12	RJ45 D-shape panel connector, uniform metal flange, double row wire-bonded PCB



● SE8FAH-C6-LED

● SE8FAV-C6

● SE8FBV-C6

● SE8FBV-C6-LED

Features

- Match with SE8MC-1-NEW and SE8MC-02-NEW or any standard RJ45 plug
- Approved latch lock system and rugged front metal or plastic flange
- Install from behind the panel and maximum panel thickness 3.0mm
- Complies with CAT6 according to TIA/EIA 568B and ISO/IEC 11801 standard
- PoE++ compliant according to 802.3bt

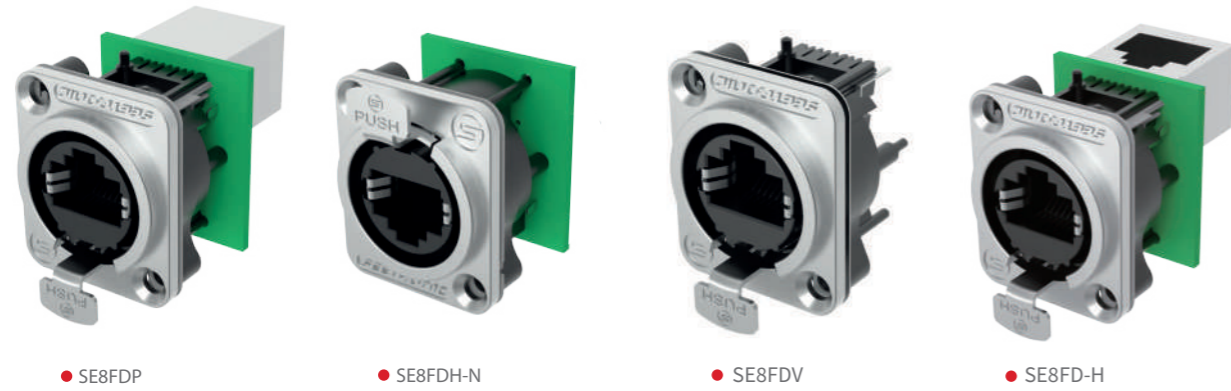


LED Light Pipe



Back View

Product Model	Description
SE8FAH-C6-LED	Horizontal PCB mount, CAT6, PoE++, two LED light pipe thru hole on plastic panel
SE8FAV-C6-LED	Vertical PCB mount, CAT6, PoE++, two LED light pipe thru hole on plastic panel
SE8FBH-C6-LED	Horizontal PCB mount, CAT6, PoE++, two LED light pipe thru hole on metal panel
SE8FBV-C6-LED	Vertical PCB mount, CAT6, PoE++, two LED light pipe thru hole on metal panel
SE8FAH-C6	Horizontal PCB mount, CAT6, PoE++, plastic panel
SE8FAV-C6	Vertical PCB mount, CAT6, PoE++, plastic panel
SE8FBH-C6	Horizontal PCB mount, CAT6, PoE++, metal panel
SE8FBV-C6	Vertical PCB mount, CAT6, PoE++, metal panel



Features

- Complies with TIA/EIA 568B and ISO/IEC 11801 and compatible with transmission class CAT5e

Product Model	Description
SE8FD-H	RJ45 D-shape panel connector, uniform metal flange, 90°, downward opening
SE8FDH-N	RJ45 D-shape panel connector, uniform metal flange, PCB
SE8FDP	RJ45 D-shape panel connector, uniform metal flange, feed-through
SE8FDV	RJ45 D-shape panel connector, uniform metal flange, PCB insert



Features

- Match with SE8MC-1-NEW and SE8MC-02-NEW or any standard RJ45 plug
- Install from the rear of the panel and can be flexibly modified according to actual requirements

Product Model	Description
SE8FAH	RJ45 receptacle, plastic panel, horizontal PCB mount
SE8FAV	RJ45 receptacle, plastic panel, vertical PCB mount
SE8FBH	RJ45 receptacle, metal panel, horizontal PCB mount
SE8FBV	RJ45 receptacle, metal panel, vertical PCB mount



SE8MC-02-NEW



SE8MC-02-B-NEW



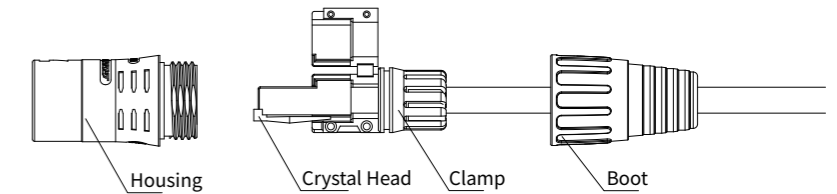
SE8MC-02-32



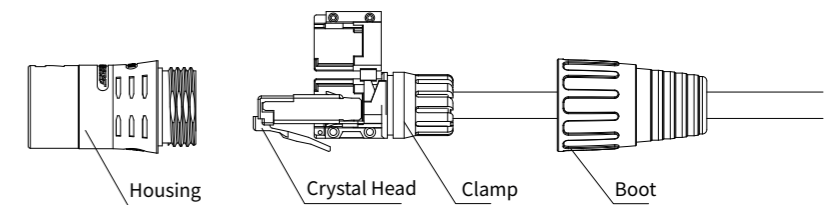
SE8MC-02-30-LOD-B

Features

- Suitable for any harsh and demanding outdoor environment with waterproof protection rating IP65 and transmission class CAT5e
- Sturdy die-cast housing and unique cable clamp
- Cable connector carrier which does not include RJ45 plug
- Sleek design protects Ethernet connections in most commercial applications and components of standard RJ45 plug



SE8MC-02-NEW(Section Parts)



SE8MC-02-30-LOD(Section Parts)

(Service life)	> 1000 mating cycles
(Insertion force)	≤20 N
(Wiring)	5-7mm
(Locking device)	latch lock
(Boot)	Polyamide
(Shell)	Zinc diecast
(Shell plating)	Pearl Cr
(Temperature range)	-30°C to +80°C

Product Model	Description
SE8MC-02-NEW	02 series cable carrier plug, suits normal crystal head, chrome housing, cable OD 5-7mm
SE8MC-02-B-NEW	02 series cable carrier plug, suits normal crystal head, black housing, cable OD 5-7mm
SE8MC-02-32	02 series cable carrier plug, suits normal/dovetail type head, chrome housing, cable OD 7.5-9mm
SE8MC-02-30-LOD-B	02 series cable carrier plug, suits normal/dovetail type head, black housing, cable OD 5-7.5mm



● SE8FC



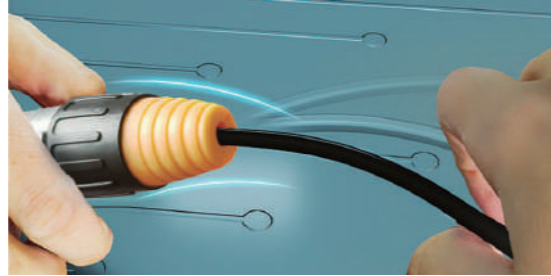
● SE8FC-30-LOD-C6A



● SE8FC-32-C6A

Features

- RJ45 female cable carrier connector, transmission class CAT5e
- Match with SE8MC-02-NEW and SE8MC-01-NEW for linking cables and achieves air docking when mated
- Cable carrier connector and does not include RJ45 plug
- More economical, beautiful and convenient alternative to replace SE8FF-X or SE8FF-02 conforming to the trend of miniaturization

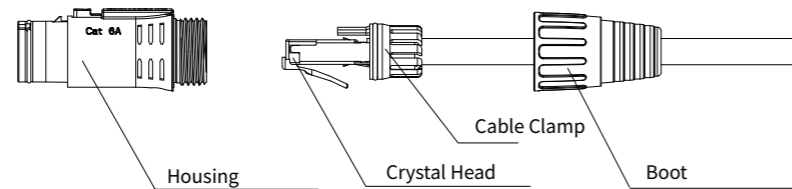


Features

- RJ45 female cable carrier connector, an upgrade to SE8FC
- Match with the SE8MC-02-NEW can reach waterproof rating IP65
- Cable carrier connector and does not include RJ45 plug
- CAT6a compliant according to TIA/EIA 568B and ISO/IEC 11801 standard and compatible with transmission levels below CAT6a
- PoE++ compliant according to 802.3bt



CNAC-FC
(Purchase Separately)



● SE8FC-30-LOD-C6A(Section Parts)

Features

- Match with SE8MC-1-NEW and SE8MC-02-NEW or any standard RJ45 plug
- RJ45 female cable carrier connector, free end flexible use, not easy to lose

Product Model	Description
SE8FC	Outdoor RJ45 female cable carrier connector, chrome housing, cable OD 5-7mm
SE8FC-30-LOD-C6A	Outdoor RJ45 female cable carrier connector, chrome housing, cable OD 5-7.5mm, CAT6a, PoE++
SE8FC-32-C6A	Outdoor RJ45 female cable carrier connector, chrome housing, cable OD 7.5-9 mm, CAT6a, PoE++



● SE8FDYH-03

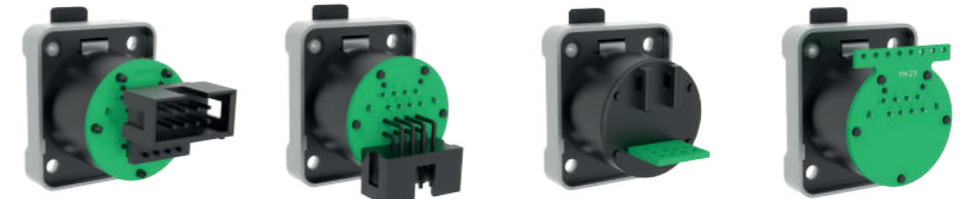


● SE8FDYH-16

● SE8FDYH-28

● SE8FDY-02

● SE8FDY-02-DC



● SE8FDYH-31

● SE8FDYV-15

● SE8FDYH-44

● SE8FDYH-23

Features

- Complies with TIA/EIA 568B and ISO/IEC 11801 with transmission class CAT5e
- Install on the front of the panel
- Equipped with waterproof rubber gasket as a standard

Product Model	Description
SE8FDYH-03	Outdoor RJ45 D-shape panel, uniform metal flange, feed-through, IP65
SE8FDYH-16	Outdoor RJ45 D-shape panel, uniform metal flange, upward 90° crystal mount, IP65
SE8FDYH-28	Outdoor RJ45 D-shape panel, uniform metal flange, downward 90° crystal mount, IP65
SE8FDY-02	Outdoor RJ45 D-shape panel, uniform metal flange, upward opening 8P horn, IP65
SE8FDY-02-DC	Outdoor RJ45 D-shape panel, uniform metal flange, downward opening 8P horn, IP65
SE8FDYH-31	Outdoor RJ45 D-shape panel, uniform metal flange, 8P horn, P65
SE8FDYV-15	Outdoor RJ45 D-shape panel, uniform metal flange, 90° 8P horn, IP65
SE8FDYH-44	Outdoor RJ45 D-shape panel, uniform metal flange, wire-bonded PCB, IP65
SE8FDYH-23	Outdoor RJ45 D-shape panel, uniform metal flange, double row wire-bonded PCB, IP65



Features

- The new anti-leakage upgrade series version with waterproof IP65 protection rating
- Better protects and extends service life of the equipment
- It can withstand air pressure of 0.2Mpa and no leakage at the rear if the waterproof cover is not in use
- D-shape with uniform metal flange, standard D-type mounting size
- Transmission level CAT5e and complies according to TIA/EIA568B and ISO/IEC11801 standards
- Fast locking and unlocking, front and rear feed-through type providing guaranteed reliability for continuous and stable signal transmission under moving conditions
- Equipped with waterproof rubber gasket as a standard

Product Model	Description
SE8FDYH-60-B	Outdoor RJ45 D-shape panel, SE8FDYH-03 upgrade, IP65, feed-through crystal head
SE8FDYH-61-B	Outdoor RJ45 D-shape panel, SE8FDYH-16 upgrade, IP65, upward 90° crystal head mount
SE8FDYH-62-B	Outdoor RJ45 D-shape panel, SE8FDYH-02-DC upgrade, IP65, downward opening 8P horn
SE8FDYH-63-B	Outdoor RJ45 D-shape panel, SE8FDYH-16 upgrade, IP65, 90° crystal mount
SE8FDYH-64-B	Outdoor RJ45 D-shape panel, SE8FDYH-16 upgrade, IP65, single row wire-bonded PCB
SE8FDYH-66-B	Outdoor RJ45 D-shape panel, SE8FDYH-16 upgrade, IP65, 8P horn



Features

- RJ45 socket with uniform metal flange, standard D-type mounting
- Transmission class CAT6a and complies according to TIA/EIA 568B and ISO/IEC 11801 standards
- PoE++ compliant according to 802.3bt
- Install on the front of the panel
- Waterproof IP65 protection rating can be achieved when used with rubber gasket for long-lasting and stable signal transmission in harsh outdoor conditions
- All-metal housing with shielding
- Airproof at the rear even the watgasket is not in use

Product Model	Description
SE8FDYH-60-C6A	Outdoor RJ45 D-shape panel, all-metal shielded housing, IP65, air leak-proof, CAT6a, PoE++



05 Series IP65 RJ45 Plug

SEETRONIC



● SE8MC-05-NEW

● SE8MC-05-30-LOD

● SE8MC-05-32

Features

- Sturdy die-cast housing and a unique cable clamp, more robust, not easily deform
- Exceptionally quick plugging and unplugging with one-hand operation which saves time
- Push-button lock design on the plug with sturdy spring inside
- Suitable for applications in mobile conditions
- Cable connector carrier which does not include RJ45
- Sleek design protects Ethernet connections in most commercial type applications and components of standard RJ45 plugs



● SE8FC-05

● SE8FC-05-30-LOD-C6A

● SE8FC-05-32-C6A

Features

- RJ45 female plug connector, free end flexible use, not easy to lose
- Match with SE8MC-05-NEW for cable extension and air-air docking when mated
- Cable connector carrier which does not include RJ45
- Good appearance design and more convenient and in line with the trend of miniaturization

Product Model	Description
SE8MC-05-NEW	Upgraded version SE8MC-02-NEW, cable OD 5-7mm, match with 05 series sockets only
SE8MC-05-NEW-30-LOD	Upgraded version SE8MC-02-NEW, cable OD 7.5-9mm, match with 05 series sockets only
SE8MC-05-NEW-32	Upgraded version SE8MC-02-NEW, cable OD 5-7.5mm, match with 05 series sockets only
SE8FC-05	Outdoor RJ45 female plug, match with SE8MC-05-NEW only, chrome housing, cable OD 5-7mm
SE8FC-05-30-LOD-C6A	Outdoor RJ45 female plug, match with SE8MC-05-NEW only, chrome housing, cable OD 7.5-9mm, CAT6a, PoE++
SE8FC-05-32-C6A	Outdoor RJ45 female plug, match with SE8MC-05-NEW only, chrome housing, cable OD 5-7.5mm, CAT6a, PoE++

05 Series IP65 RJ45 Socket

SEETRONIC



● SE8FD05-01-C6A



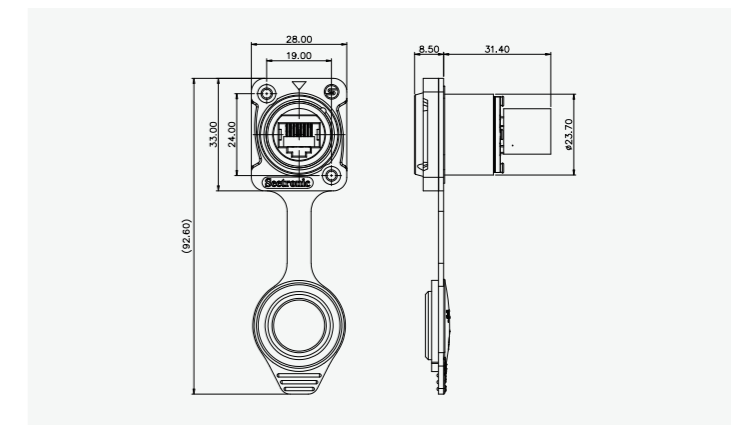
● SE8FD05-C6A

Features

- RJ45 socket with uniform metal flange, standard D-type mounting
- Install on the front of the panel, feed-through, match with SE8MC-05-NEW
- Equipped with waterproof cover and can achieve IP65 protection level which can meet the long-lasting and stable signal transmission in harsh outdoor conditions
- Air-proof at the rear even without the use of gasket
- Transmission class CAT6a and complies according to TIA/EIA 568B and ISO/IEC 11801 standards
- PoE++ compliant according to 802.3bt
- Fast locking and unlocking, front and rear feed-through, providing guaranteed reliability for continuous and stable signal transmission under moving conditions
- All-metal housing with shielding and equipped with gasket as standard

Features

- RJ45 socket with uniform metal flange, standard D-type mounting
- Install on the front of the panel, feed-through, match with SE8MC-05-NEW
- Mated with waterproof cover and can achieve IP65 protection level which can meet the long-lasting and stable signal transmission in harsh outdoor conditions
- Transmission class CAT6a and complies according to TIA/EIA 568B and ISO/IEC 11801 standards
- Front and rear feed-through, fast locking and unlocking providing guaranteed reliability for continuous and stable signal transmission under moving conditions



Product Model	Description
SE8FD05-C6A	Outdoor RJ45 D-shape panel, feed-through, IP65, CAT6a
SE8FD05-01-C6A	Outdoor RJ45 D-shape panel, feed-through, IP65, air leak proof, CAT6a, PoE++



Features

- RJ45 socket with uniform metal flange, standard D-type mounting
- Install on the front of the panel, front and rear feed-through, equipped with gasket as a standard
- Mated with gasket cover achieves IP65 protection level which can meet the long-lasting and stable signal transmission in harsh outdoor conditions
- Transmission class CAT5e and complies according to TIA/EIA 568B and ISO/IEC 11801 standards
- Fast locking and unlocking providing guaranteed reliability for continuous and stable signal transmission under moving conditions

Product Model	Description
SE8FD05-01	Outdoor RJ45 D-shape panel, feed-through, IP65, match with SE8MC-05-NEW only
SE8FD05-02	Outdoor RJ45 D-shape panel, upward 90° crystal head mount, IP65, match with SE8MC-05-NEW only
SE8FD05-03	Outdoor RJ45 D-shape panel, opening downward 8P horn, IP65, match with SE8MC-05-NEW only
SE8FD05-19	Outdoor RJ45 D-shape panel, 05 network socket + 2X4P 90° horn
SE8FD05-23	Outdoor RJ45 D-shape panel, PCB, IP65, match with SE8MC-05-NEW only
SE8FD05-30-22	Outdoor RJ45 D-shape panel, wire-bonded PCB, needle pin length can be customized
SE8FD05-40	Outdoor RJ45 D-shape panel, wire-bonded

Features

- Panel front mounting
- Transmission class CAT5e and complies according to TIA/EIA 568B and ISO/IEC 11801 standards
- Double-row soldering PCB at the rear and can be flexibly transform according to actual needs
- Equipped with with rubber gasket as a standard

Product Model	Description
SE8C05-01-BC	05 combined network socket + 180° crystal head, black chrome housing
SE8C05-27-BC	05 combined network socket + 180° 1.5 8P horn, black chrome housing
SE8C05-01-B	05 combined network socket + 180° crystal head, black housing



• SE8FF-X



• SE8FF-02



• SE8FF-02 - C6A



• SE8FF-X-C6A



• SE8FF-05



• SE8FF-05-C6A

Features

- Exquisite design appearance, compact, very light weight, easy to carry and space-saving
- Fast and stable signal transmissionst

Product Model	Description
SE8FF-X	Indoor RJ45 feedthrough coupler for linking cable, accommodates SE8MC-1-NEW, CAT5e
SE8FF-X-C6A	Indoor RJ45 feedthrough coupler for linking cable, accommodates SE8MC-1-NEW, CAT6a, PoE++
SE8FF-02	Outdoor RJ45 feedthrough coupler for linking cable, accommodates SE8MC-02-NEW, CAT5e
SE8FF-02-C6A	Outdoor RJ45 feedthrough coupler for linking cable, accommodates SE8MC-02-NEW, CAT6a, PoE++
SE8FF-05	Outdoor RJ45 feedthrough coupler for linking cable, accommodates SE8MC-05-NEW, CAT5E
SE8FF-05-C6A	Outdoor RJ45 feedthrough coupler for linking cable, accommodates SE8MC-05-NEW, CAT6A, PoE++



IP67 Power Connector

Professionally Designed
Waterproof and Airproof
Easy Locking and High Reliability

X Series IP67 Power Plug

SEETRONIC



• SAC3FX-67



• SAC3MX-67

Features

- Lockable three-core power device AC connector with contacts for line, neutral and pre-adapted safety grounding
- Quick and easy locking system, newly designed push-down lock key structure with independent sealing mechanism
- Very safe application in harsh and harsh outdoor environments and can achieve waterproof and airproof at the same time with IP67 protection rating
- UL, VDE, PSE, IEC60320-1 Certification

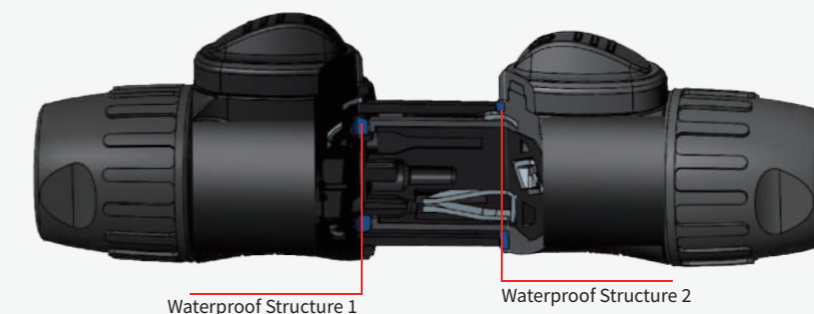
Product Model	Description
SAC3FX-67	Outdoor lockable 3-core AC female power connector, rated current UL300V/20A, VDE250V/16A, IP67
SAC3MX-67	Outdoor lockable 3-core AC male power connector, rated current UL300V/20A, VDE250V/16A, IP67

Mated Condition View

Waterproof pt. 2, the plug is directly sealed externally after matching the socket. It is more reliable to avoid water accumulation inside the socket and dual waterproof.



Mating Effect





• SAC3FPX-67



• SAC3FPX20-67



• SAC3MPX-67

Features

- Lockable three-core power device AC connector with contacts for line, neutral and pre-adapted safety grounding
- Quick and easy locking system, firm lock and does not fall off
- Very safe application in harsh and harsh outdoor environments and can achieve waterproof and airproof at the same time with IP67 protection rating
- UL, VDE, PSE, IEC60320-1 Certification



• CNAC-MPX-67



• CNAC-FPX-67

Product Model	Description
SAC3FPX-67	Outdoor lockable 3-core IP67 power-in socket, rated current UL 300V/20A, VDE 250V/16A, O-ring design
SAC3FPX20-67	Outdoor lockable 3-core IP67 power-in socket, compact, rated current UL 300V/20A, VDE 250V/16A
SAC3MPX-67	Outdoor lockable 3-core IP67 power-out socket, rated current UL 300V/20A, VDE 250V/16A

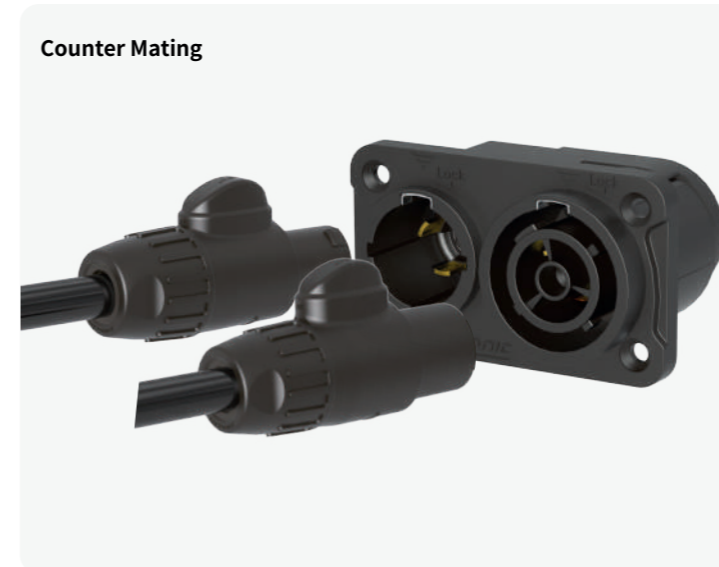
Counter Mating



• SAC3PX - 67



Counter Mating



• CNAC-PX-67

Features

- Combined SAC3MPX-67 and SAC3FPX-67, saves space and makes the device more aesthetically nice looking
- Durable, rugged and sealed power connector for electrical links in outdoor conditions with IP67 rating
- UL, VDE, PSE, IEC60320-1 Certification
- Does not equipped with waterproof gaskets, to be purchased separately, model number CNAC-PX-67

Product Model	Description
SAC3PX - 67	Combined SAC3FPX and SAC3MPX, rated current UL 300V/20A, VDE 250V/16A, IP67



• SAC3FCA



• SAC3FCB



• SAC3MPA



• SAC3MPA (Back)



• SAC3MPA-M (Back)



• SAC3MPB



• SAC3MPB (Back)



• SAC3MPB-M (Back)

Features

- Lockable three-core power device AC connector with contacts for line, neutral and pre-adapted safety grounding
- Quick and easy locking system, firm lock and does not fall off
- Certified UL, VDE, PSE, IEC60320-1 standards

Product Model	Description
SAC3FCA	Indoor lockable 3-core power-in plug, rated current UL 250V/20A, VDE 250V/20A, IEC60320-1 250V/16A
SAC3FCB	Indoor lockable 3-core power-out plug, rated current UL 250V/20A, VDE 250V/20A, IEC60320-1 250V/16A
SAC3MPA	Indoor lockable 3-core power-in socket, rated current UL 250V/20A, VDE 250V/20A, IEC60320-1 250V/16A
SAC3MPB	Indoor lockable 3-core power-out socket, rated current UL 250V/20A, VDE 250V/20A, IEC60320-1 250V/16A
SAC3MPA-M	Indoor lockable 3-core power-in socket, rated current UL 250V/20A, VDE 250V/20A, IEC60320-1 250V/16A
SAC3MPB-M	Indoor lockable 3-core power-out socket, rated current UL 250V/20A, VDE 250V/20A, IEC60320-1 250V/16A



• SAC3MPA-02



Features

- Lockable three-core power device AC connector with contacts for line, neutral and pre-adapted safety grounding
- Combined input and output power socket, compact and space-saving
- Quick and easy twist-lock system
- Robust and reliable 20A/250V AC current capacity



• SAC3MM



Features

- Easy conversion of power from input to output (docking) in demanding situation
- Firm connection, simple operation for linking power cables
- High current capacity rated at 20A/250V AC

Product Model	Description
SAC3MPA-02	Indoor power appliance combining SAC3MPA and SAC3MPB, 20A/250V AC current capacity
SAC3MM	Power connector coupler for linking cables, SAC3MPA (power-in) - SAC3MPB (power-out)
SAC3MMA	Power connector coupler for linking cables, SAC3MPA (power-in) - SAC3MPA (power-in)
SAC3MMB	Power connector coupler for linking cables, SAC3MPB (power-out) - SAC3MPB (power-out)



• SAC3FCA-N-W



• SAC3FCB-N-W



• SAC3MPA-N-W



• SAC3MPA-N-W (Back)



• SAC3MPA-W-M



• CNAC-MPAB



• SAC3MPB-N-W



• SAC3MPB-N-W (Back)



• SAC3MPB-W-M

Features

- Lockable three-core power device AC connector with contacts for line, neutral and pre-adapted safety grounding
- Quick and easy locking system, firm lock and does not fall off
- Waterproof IP65 protection rating
- Certified UL, VDE, PSE, IEC60320-1 standards
- Does not equipped with waterproof rubber, to be purchased separately.

Product Model	Description
SAC3FCA-N-W	Outdoor lockable 3-core power-in plug, rated current UL 250V/20A, VDE 250V/20A, IEC60320-1 250V/16A, IP65
SAC3FCB-N-W	Outdoor lockable 3-core power-out plug, rated current UL 250V/20A, VDE 250V/20A, IEC60320-1 250V/16A, IP65
SAC3MPA-N-W	Outdoor lockable 3-core power-in socket, rated current UL 250V/20A, VDE 250V/20A, IEC60320-1 250V/16A, IP65
SAC3MPB-N-W	Outdoor lockable 3-core power-out socket, rated current UL 250V/20A, VDE 250V/20A, IEC60320-1 250V/16A, IP65
SAC3MPA-W-M	Outdoor lockable 3-core power-in socket, rated current UL 250V/20A, VDE 250V/20A, IP65
SAC3MPB-W-M	Outdoor lockable 3-core power-out socket, rated current UL 250V/20A, VDE 250V/20A, IP65



• SAC3MCA



• SAC3MCB



• SAC3MCA-N-W



• SAC3MCB-N-W

Features

- Can be docked with power plug for linking cables, more convenient to use, more compact, and looks nicer
- Lockable three-core power device AC connector with contacts for line, neutral and pre-adapted safety grounding
- Quick and easy locking system and high current capacity

Product Model	Description
SAC3MCA	Indoor lockable 3-core power cable connector, can be docked with SAC3FCA for linking cables
SAC3MCB	Indoor lockable 3-core power cable connector, can be docked with SAC3FCB for linking cables
SAC3MCA-N-W	Indoor lockable 3-core power cable connector, can be docked with SAC3FCA-N-W for linking cables
SAC3MCB-N-W	Indoor lockable 3-core power cable connector, can be docked with SAC3FCB-N-W for linking cables



• SAC3FX

• SAC3MX



• SAC3FPX



• SAC3MPX



• CNAC-FPX



• CNAC-MPX

Description

- Highly sealed power connectors for harsh and demanding environments
- Lockable three-core power device AC connector with contacts for line, neutral and pre-adapted safety grounding
- Waterproof IP65 protection rating
- Quick and easy locking system, newly designed push-down lock key structure with independent sealing mechanism
- Certified UL, VDE, PSE, IEC60320-1 standards

Product Model	Description
SAC3FX	Outdoor 3-core power-in plug, rated current UL 250V/20A, VDE 250V/16A, IEC60320-1 250V/16A, IP65
SAC3MX	Outdoor 3-core power-out plug, rated current UL 250V/20A, VDE 250V/16A, IEC60320-1 250V/16A, IP65
SAC3FPX	Outdoor 3-core power-in socket, rated current UL 250V/20A, VDE 250V/16A, IEC60320-1 250V/16A, IP65
SAC3MPX	Outdoor 3-core power-out socket, rated current UL 250V/20A, VDE 250V/16A, IEC60320-1 250V/16A, IP65



• SAC3FPX20



• CNAC-FPX20



• CNAC-FPX20-02

Features

- Upgraded version of SAC3FPX-LY, D-size female power socket
- More compact, light weight and can achieve the same opening size of input and output panels which is in line with the development trend of equipment miniaturization
- Durable, rugged and sealed power connector for electrical connections in outdoor conditions with IP65 protection rating
- Match with SAC3MPX-LY power plug
- Can achieve the effects of preventing water and air leakage at the same time
- Does not equipped with waterproof rubber, to be purchased separately, model number CNAC-FPX20
- Certified UL, VDE, PSE, CQC standards

Product Model	Description
SAC3FPX20	Smaller size of SAC3FPX-LY, match with SAC3MPX-LY, D-shape, compact, rated current UL 250V/20A, VDE 250V/16A, CQC 250V/20A, gold contacts





• SAC3PX

Counter Mating



• CNAC-PX

Features

- Lockable three-core power device AC connector with contacts for line, neutral and pre-adapted safety grounding
- Quick and easy twist-lock system
- Certified UL, VDE, PSE, IEC60320-1 standards
- Combined input and output socket, compact structure, space-saving

Product Model	Description
SAC3PX	Combined SAC3FPX and SAC3MPX, rated current UL 250V/20A, VDE 250V/16A, IEC60320-1 250V/16A, outdoor power supply equipment, IP65 protection rating using CNAC-PX waterproof rubber cover



• SAC3FG



• SAC3MG



• SAC3FG(DJ)



• SAC3MG(DJ)

Features

- A variety of 3-core power plug design to meet diverse industrial needs
- Zinc alloy housing and internal component material with complete protection against EMI and RFI
- Gold-plated contacts with high corrosion resistance and electrical conductivity
- PA66 housing provides stable electrical performance and high voltage and temperature, anti-explosion and corrosion resistances
- No need to twist when plugging/unplugging, bigger surface contact area which is safer for electric circuit contact
- Waterproof IP65 protection rating

Product Model	Description
SAC3FG	Outdoor 3-core power-in plug, PA66 housing, gold contacts, rated current 20A, IP65, matched with SAC3MPG
SAC3MG	Outdoor 3-core power-out plug, PA66 housing, gold contacts, rated current 20A, IP65, matched with SAC3FPG
SAC3FG(DJ)	Outdoor 3-core power-in plug, PA66 housing, gold contacts, rated current 20A, IP65, matched with SAC3MG
SAC3MG(DJ)	Outdoor 3-core power-out plug, PA66 housing, gold contacts, rated current 20A, IP65, matched with SAC3FG

对插效果



SAC3FG | SAC3MG(DJ)

SAC3MG | SAC3FG(DJ)



Features

- A variety of 3-core power plug design to meet diverse industrial needs
- Zinc alloy housing and internal component material with complete protection against EMI and RFI
- Gold-plated contacts with high corrosion resistance and electrical conductivity
- PA66 housing provides stable electrical performance and high voltage and temperature, anti-explosion and corrosion resistances
- Rated current capacity at 20A
- Waterproof IP65 protection rating

Product Model	Description
SAC3FPG	Outdoor 3-core power-in socket, PA66 housing, gold contacts, rated current 20A, IP65, match with SAC3MG
SAC3MPG	Outdoor 3-core power-out socket, PA66 housing, gold contacts, rated current 20A, IP65, match with SAC3FG
SAC3FPG-40	Outdoor 3-core power-in socket, PA66 housing, gold contacts, rated current 20A, IP65, 4-screw fixing holes
SAC3MPG-40	Outdoor 3-core power-out socket, PA66 housing, gold contacts, rated current 20A, IP65, 4-screw fixing holes

Counter Mating Effect



IP67 Waterproof XLR

Polyurethane Sealing

Robust Zinc Die-cast Housing

Long Service Life and High Reliability



● SCWF3-67



● SCWM3-67



● SCWM5-67



● SCWM5-B-67

Features

- The industry's first waterproof XLR plug with IP67 protection rating
- Housing is available in pearl chrome and black electroplated and gold plated contacts
- Solvel to the fullest degree the fast connection requirements of the DMX lighting industry in outdoor conditions for signal input and output
- Designed to reduce vibration and improve transmission stability and protection



Connection View

(Mechanical parameters)

(Sign Cable O.D.)	5-8mm
(Insertion force)	≤ 20N
(Withdrawal force)	≤ 20N
(Service life)	>1000 mating cycles
(Wire size)	Max. 2.5 mm ²
(Wire size)	Max. 14 AWG
(Locking device)	Latch lock

Product Model	Description
SCWF3-67	3-core waterproof XLR female plug, pearl chrome housing, gold contacts, IP67 rating
SCWF3-B-67	3-core waterproof XLR female plug, black housing, gold contacts, IP67 rating
SCWM3-67	3-core waterproof XLR male plug, pearl chrome housing, gold contacts, IP67 rating
SCWM3-B-67	3-core waterproof XLR male plug, black housing, gold contacts, IP67 rating
SCWF4-67	4-core waterproof XLR female plug, pearl chrome housing, gold contacts, IP67 rating
SCWF4-B-67	4-core waterproof XLR female plug, black housing, gold contacts, IP67 rating
SCWM4-67	4-core waterproof XLR male plug, pearl chrome housing, gold contacts, IP67 rating
SCWM4-B-67	4-core waterproof XLR male plug, black housing, gold contacts, IP67 rating
SCWF5-67	5-core waterproof XLR female plug, pearl chrome housing, gold contacts, IP67 rating
SCWF5-B-67	5-core waterproof XLR female plug, black housing, gold contacts, IP67 rating
SCWM5-67	5-core waterproof XLR male plug, pearl chrome housing, gold contacts, IP67 rating
SCWM5-B-67	5-core waterproof XLR male plug, black housing, gold contacts, IP67 rating



● J3F2C-W-B-67



● J5F2C-W-67



● K3F2C-W-67



● K5F2C-W-B-67

Features

- The industry's first waterproof XLR socket with IP67 protection rating
- Air-proof treatment at the rear to prevent moisture from entering inside the equipment
- D-shaped metal housing provides compatibility with industry standard D-type mounting dimensions
- Install on the front of the panel
- Solvel to the fullest degree the fast connection requirements of the DMX lighting industry in outdoor conditions for signal input and output



Connection View

Product Model	Description
J3F2C-W-67	3-core XLR male socket, pearl chrome housing, gold contacts, IP67
J3F2C-W-B-67	3-core XLR male socket, black housing, gold contacts, IP67
K3F2C-W-67	3-core XLR female socket, pearl chrome housing, gold contacts, IP67
K3F2C-W-B-67	3-core XLR female socket, black housing, gold contacts, IP67
J4F2C-W-67	4-core XLR male socket, pearl chrome housing, gold contacts, IP67
J4F2C-W-B-67	4-core XLR male socket, black housing, gold contacts, IP67
K4F2C-W-67	4-core XLR female socket, pearl chrome housing, gold contacts, IP67
K4F2C-W-B-67	4-core XLR female socket, black housing, gold contacts, IP67
J5F2C-W-67	5-core XLR male socket, pearl chrome housing, gold contacts, IP67
J5F2C-W-B-67	5-core XLR male socket, black housing, gold contacts, IP67
K5F2C-W-67	5-core XLR female socket, pearl chrome housing, gold contacts, IP67
K5F2C-W-B-67	5-core XLR female socket, black housing, gold contacts, IP67



● CNAC-J-67



● CNAC-K-67



Installation View

Stainless Steel XLR

No fear of falling from a height

No fear of heavy crushing

Robust and not easily deform

Ideal for mobile applications

H Series XLR Plugs

SEETRONIC



● SCHF3



● SCHM3



● SCHF4-BG



● SCHM4-BG



● SCHF5



● SCHM5

Product Model	Description
SCHF3	3-core XLR female plug, stainless steel housing, gold contacts, cable OD 3.5-9mm
SCHF3-B	3-core XLR female plug, black housing, gold contacts, cable OD 3.5-9mm
SCHM3	3-core XLR male plug, stainless steel housing, gold contact, cable OD 3.5-9mm
SCHM3-B	3-core XLR male plug, black housing, gold contacts, cable OD 3.5-9mm
SCHF4	4-core XLR female plug, stainless steel housing, gold contacts, cable OD 3.5-9mm
SCHF4-B	4-core XLR female plug, black housing, gold contacts, cable OD 3.5-9mm
SCHM4	4-core XLR male plug, stainless steel housing, gold contact, cable OD 3.5-9mm
SCHM4-B	4-core XLR male plug, black housing, gold contacts, cable OD 3.5-9mm
SCHF5	5-core XLR female plug, stainless steel housing, gold contacts, cable OD 3.5-9mm
SCHF5-B	5-core XLR female plug, black housing, gold contacts, cable OD 3.5-9mm
SCHM5	5-core XLR male plug, stainless steel housing, gold contact, cable OD 3.5-9mm
SCHM5-B	5-core XLR male plug, black housing, gold contacts, cable OD 3.5-9mm
SCHF3-LOD	3-core XLR female plug, stainless steel housing, gold contacts, cable OD 9-10mm
SCHM3-LOD	3-core XLR male plug, stainless steel housing, gold contacts, cable OD 9-10mm

(Mechanical parameters)

(Insertion force)	≤ 20N
(Withdrawal force)	≤ 20N
(Service life)	> 1000 mating cycles
(Wire size)	Max. 2.5 mm ²
(Wire size)	Max. 14 AWG
(Locking device)	Latch lock

Features

- Stainless steel housing, rugged, long life and high reliability
- Brand new exterior design, smoother operation
- New grounding (good complete contact between socket and cable connectors)
- Colored ring design for coding and identification
- Resistant to drop and pressure which can still operate stably under harsh conditions
- The boot is equipped with polyurethane sealing sleeve to protect the cable from being affected by bending pressure to a maximum extent



Ring Design

New Exterior Look



* GY-Gray BK-Black RD-Red BN-Brown OG-Orange PU-Purple YE-Yellow BU-Blue GN-Green WH-White

M Series XLR Plugs

SEETRONIC



● SCMM3



● SCMF3



● SCMM4-BG



● SCMF4-BG



● SCMM5

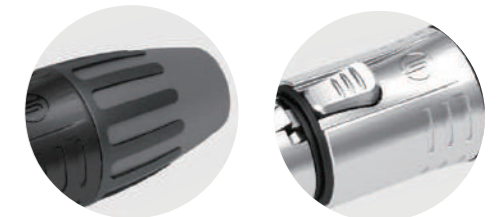


● SCMF5

Product Model	Description
SCMF3	3-core XLR female plug, pearl chrome housing, silver contacts
SCMF3-B	3-core XLR female plug, black housing, silver contacts
SCMF3-G	3-core XLR female plug, pearl chrome housing, gold contacts
SCMF3-BG	3-core XLR female plug, black housing, gold contacts
SCMM3	3-core XLR male plug, pearl chrome housing, silver contacts
SCMM3-B	3-core XLR male plug, black housing, silver contacts
SCMM3-G	3-core XLR male plug, pearl chrome housing, gold contacts
SCMM3-BG	3-core XLR male plug, black housing, gold contacts
SCMF4	4-core XLR female plug, pearl chrome housing, silver contacts
SCMF4-B	4-core XLR female plug, black housing, silver contacts
SCMF4-G	4-core XLR female plug, pearl chrome housing, gold contacts
SCMF4-BG	4-core XLR female plug, black housing, gold contacts
SCMM4	4-core XLR male plug, pearl chrome housing, silver contacts
SCMM4-B	4-core XLR male plug, black housing, silver contacts
SCMM4-G	4-core XLR male plug, pearl chrome housing, gold contacts
SCMM4-BG	4-core XLR male plug, black housing, gold contacts
SCMF5	5-core XLR female plug, pearl chrome housing, silver contacts
SCMF5-B	5-core XLR female plug, black housing, silver contacts
SCMF5-G	5-core XLR female plug, pearl chrome housing, gold contacts
SCMF5-BG	5-core XLR female plug, black housing, gold contacts
SCMM5	5-core XLR male plug, pearl chrome housing, silver contacts
SCMM5-B	5-core XLR male plug, black housing, silver contacts
SCMM5-G	5-core XLR male plug, pearl chrome housing, gold contacts
SCMM5-BG	5-core XLR male plug, black housing, gold contacts

Features

- Good appearance design with smooth handling operation
- The metal housing adopts internal thread design
- Two cable clamps are provided for different cable OD: black - 3.5-6mm; white - 6-8mm
- No ring design which is more compact and can save space
- Colored boots available for coding and identification
- The boot is equipped with polyurethane sealing sleeve to protect the cable from being affected by bending pressure to a maximum extent



Boot

Double Line Design



* GY-Gray BK-Black RD-Red BN-Brown OG-Orange PU-Purple YE-Yellow BU-Blue GN-Green WH-White



● SCSF3



● SCSM3



● SCSF4-BG



● SCSM4-BG



● SCSF5



● SCSM5

Product Model	Description
SCSF3	3-core XLR female plug, nickel housing, silver contacts
SCSF3-B	3-core XLR female plug, black housing, silver contacts
SCSF3-G	3-core XLR female plug, nickel housing, gold contacts
SCSF3-BG	3-core XLR female plug, black housing, gold contacts
SCSM3	3-core XLR male plug, nickel housing, silver contacts
SCSM3-B	3-core XLR male plug, black housing, silver contacts
SCSM3-G	3-core XLR male plug, nickel housing, gold contacts
SCSM3-BG	3-core XLR male plug, black housing, gold contacts
SCSF4	4-core XLR female plug, nickel housing, silver contacts
SCSF4-B	4-core XLR female plug, black housing, silver contacts
SCSF4-G	4-core XLR female plug, nickel housing, gold contacts
SCSF4-BG	4-core XLR female plug, black housing, gold contacts
SCSM4	4-core XLR male plug, nickel housing, silver contacts
SCSM4-B	4-core XLR male plug, black housing, silver contacts
SCSM4-G	4-core XLR male plug, nickel housing, gold contacts
SCSM4-BG	4-core XLR male plug, black housing, gold contacts
SCSF5	5-core XLR female plug, nickel housing, silver contacts
SCSF5-B	5-core XLR female plug, black housing, silver contacts
SCSF5-G	5-core XLR female plug, nickel housing, gold contacts
SCSF5-BG	5-core XLR female plug, black housing, gold contacts
SCSM5	5-core XLR male plug, nickel housing, silver contacts
SCSM5-B	5-core XLR male plug, black housing, silver contacts
SCSM5-G	5-core XLR male plug, nickel housing, gold contacts
SCSM5-BG	5-core XLR male plug, black housing, gold contacts
SCSF3-LOD	3-core XLR female plug, nickel housing, silver contacts, cable OD 7.5-9mm
SCSM3-LOD	3-core XLR male plug, nickel housing, silver contacts, cable OD 7.5-9mm

Features

- 3, 4 and 5 core XLR plugs, nickel and black plated housing, silver or gold plated contacts
 - Two cable clamps are provided for different cable OD: black - 3.5-6mm; white - 6-8mm
 - No ring design, more compact, high reliability and suitable for any harsh environments
 - Metal housing adopts external thread design provides convenient locking and reduce assembly time
 - Durable, corrosion-resistant, more than 5000 mating cycles
 - Upgraded cable clamp which increase retention and makes assembly easier and faster
- Colored boots available for coding and identification



* GY-Gray BK-Black RD-Red BN-Brown OG-Orange PU-Purple YE-Yellow BU-Blue GN-Green WH-White



● MJ3F2C



● MJ5F2C-BG



● MK3F2C

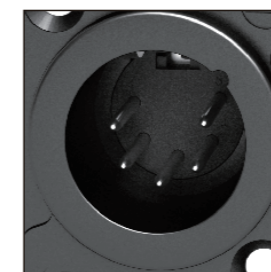


● MK5F2C

Features

- D-shape metal housing provides compatibility with industry standard D-type mounting dimensions
- Mountable on the front or rear of the panel
- Short axial size, space saving and light weight

Product Model	Description
MJ3F2C	3-pin XLR male socket, pearl chrome housing, silver contacts
MJ3F2C-B	3-pin XLR male socket, black housing, silver contacts
MJ3F2C-G	3-pin XLR male socket, pearl chrome housing, gold contacts
MJ3F2C-BG	3-pin XLR male socket, black housing, gold contacts
MK3F2C	3-pin XLR female socket, pearl chrome housing, silver contacts
MK3F2C-B	3-pin XLR female socket, black housing, silver contacts
MK3F2C-G	3-pin XLR female socket, pearl chrome housing, gold contacts
MK3F2C-BG	3-pin XLR female socket, black housing, gold contacts
MJ4F2C	4-pin XLR male socket, pearl chrome housing, silver contacts
MJ4F2C-B	4-pin XLR male socket, black housing, silver contacts
MJ4F2C-G	4-pin XLR male socket, pearl chrome housing, gold contacts
MJ4F2C-BG	4-pin XLR male socket, black housing, gold contacts
MK4F2C	4-pin XLR female socket, pearl chrome housing, silver contacts
MK4F2C-B	4-pin XLR female socket, black housing, silver contacts
MK4F2C-G	4-pin XLR female socket, pearl chrome housing, gold contacts
MK4F2C-BG	4-pin XLR female socket, black housing, gold contacts
MJ5F2C	5-pin XLR male socket, pearl chrome housing, silver contacts
MJ5F2C-B	5-pin XLR male socket, black housing, silver contacts
MJ5F2C-G	5-pin XLR male socket, pearl chrome housing, gold contacts
MJ5F2C-BG	5-pin XLR male socket, black housing, gold contacts
MK5F2C	5-pin XLR female socket, pearl chrome housing, silver contacts
MK5F2C-B	5-pin XLR female socket, black housing, silver contacts
MK5F2C-G	5-pin XLR female socket, pearl chrome housing, gold contacts
MK5F2C-BG	5-pin XLR female socket, black housing, gold contacts



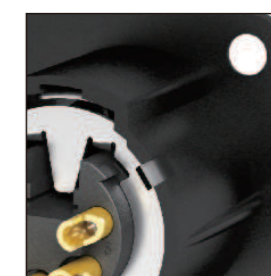
Silver Contacts



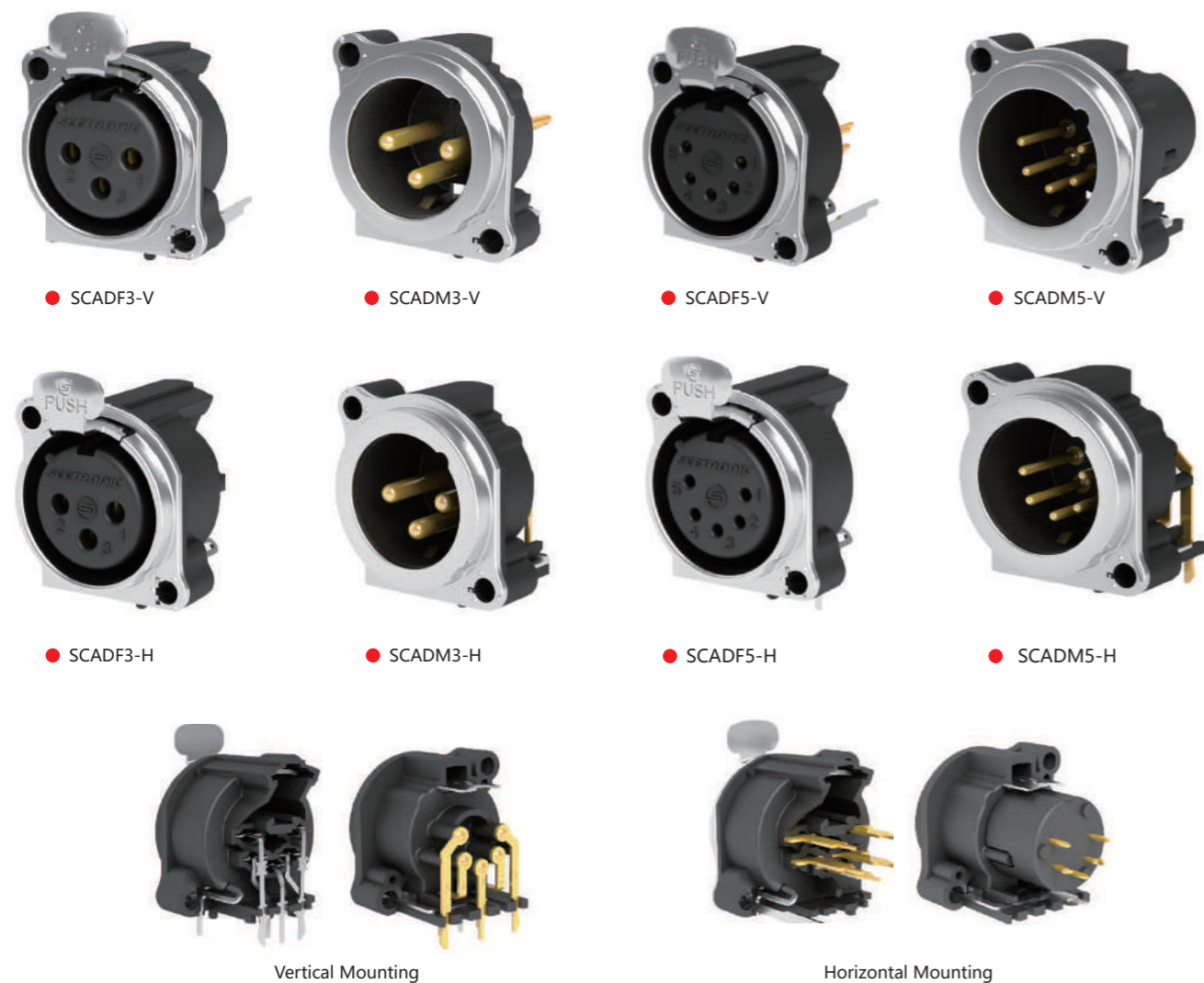
Gold Contacts



Pearl Chrome Housing



Black Housing



● SCADF3-V ● SCADM3-V ● SCADF5-V ● SCADM5-V
● SCADF3-H ● SCADM3-H ● SCADF5-H ● SCADM5-H

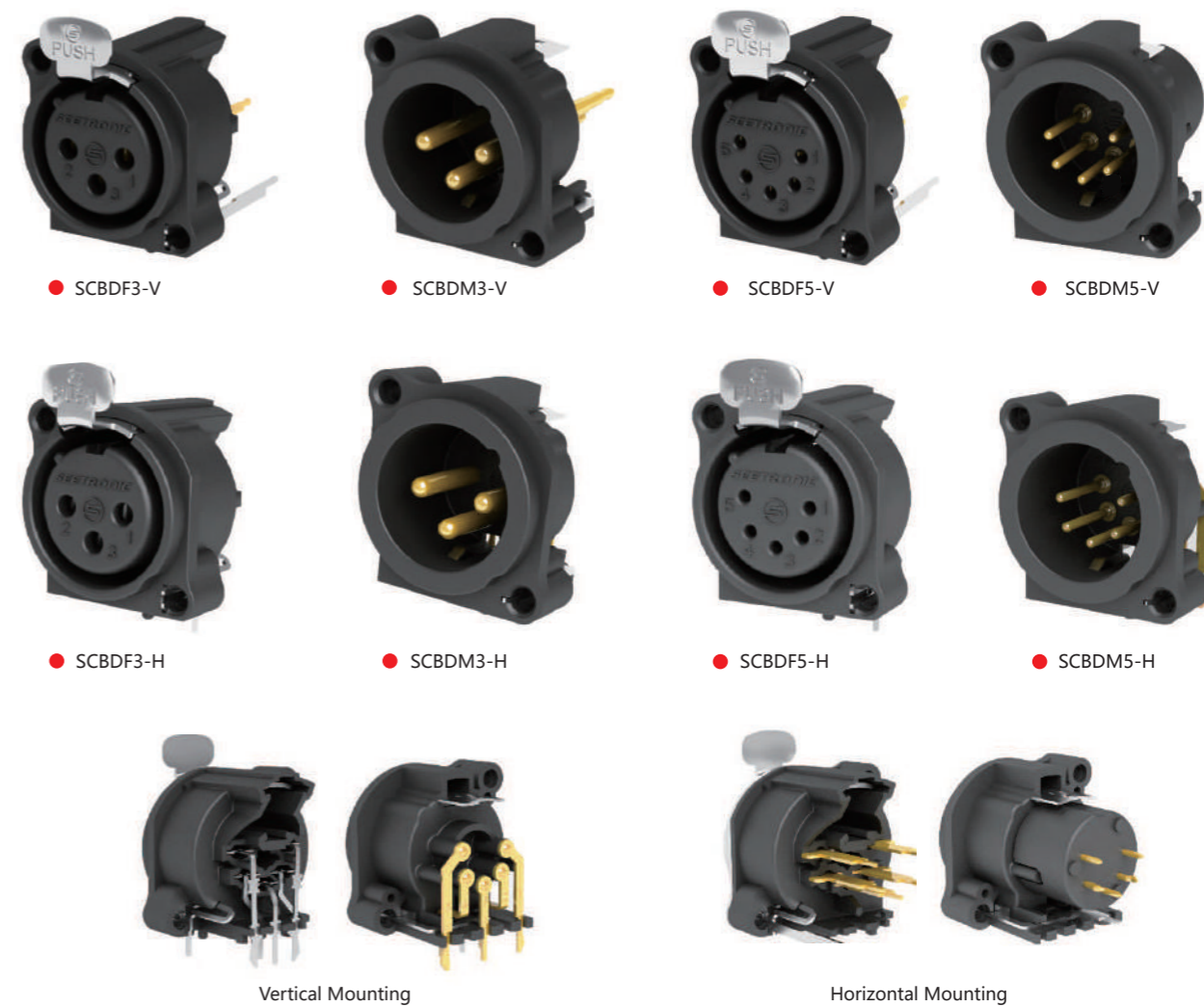
Vertical Mounting

Horizontal Mounting

Features

- Small size and high packing density (23mm between centers)
- Install from the rear of the panel, good appearance and economical, gold contacts
- Round metal flange, steel latch lock and PCB mount panel

Product Model	Description
SCADF3-V	3-pin XLR female socket, grounding: separate ground contact to fit connector shell, vertical PCB mount
SCADF3-V1	3-pin XLR female socket, grounding: mated connector housing to pin1 and front panel, vertical PCB mount
SCADM3-V	3-pin XLR male socket, grounding: separate ground contact to fit connector shell, vertical PCB mount
SCADM3-V1	3-pin XLR female socket, grounding: mated connector housing to pin1 and front panel, vertical PCB mount
SCADF3-H	3-pin XLR female socket, grounding: separate ground contact to fit connector shell, horizontal PCB mount
SCADM3-H	3-pin XLR male socket, grounding: separate ground contact to fit connector shell, horizontal PCB mount
SCADF5-V	5-pin XLR female socket, grounding: separate ground contact to fit connector shell, vertical PCB mount
SCADM5-V	5-pin XLR male socket, grounding: separate ground contact to fit connector shell, vertical PCB mount
SCADF5-H	5-pin XLR female socket, grounding: separate ground contact to fit connector shell, horizontal PCB mount
SCADM5-H	5-pin XLR male socket, grounding: separate ground contact to fit connector shell, horizontal PCB mount



● SCBDF3-V ● SCBDM3-V ● SCBDF5-V ● SCBDM5-V
● SCBDF3-H ● SCBDM3-H ● SCBDF5-H ● SCBDM5-H

Vertical Mounting

Horizontal Mounting

Features

- Small size and high packing density (23mm between centers)
- Install from the rear of the panel, good appearance and economical, gold contacts
- Round plastic body, steel latch lock and PCB mount panel

Product Model	Description
SCBDF3-V	3-pin XLR female socket, grounding: separate ground contact to fit connector shell, vertical PCB mount
SCBDF3-V1	3-pin XLR female socket, grounding: mated connector housing to pin1 and front panel, vertical PCB mount
SCBDM3-V	3-pin XLR male socket, grounding: separate ground contact to fit connector housing, vertical PCB mount
SCBDM3-V1	3-pin XLR male socket, grounding: mated connector housing to pin1 and front panel, vertical PCB mount
SCBDF3-H	3-pin XLR female socket, grounding: separate ground contact to fit connector shell, horizontal PCB mount
SCBDM3-H	3-pin XLR male socket, grounding: separate ground contact to fit connector shell, horizontal PCB mount
SCBDF5-V	5-pin XLR female socket, grounding: separate ground contact to fit connector shell, vertical PCB mount
SCBDM5-V	5-pin XLR male socket, grounding: separate ground contact to fit connector shell, vertical PCB mount
SCBDF5-H	5-pin XLR female socket, grounding: separate ground contact to fit connector shell, horizontal PCB mount
SCBDM5-H	5-pin XLR male socket, grounding: separate ground contact to fit connector shell, horizontal PCB mount



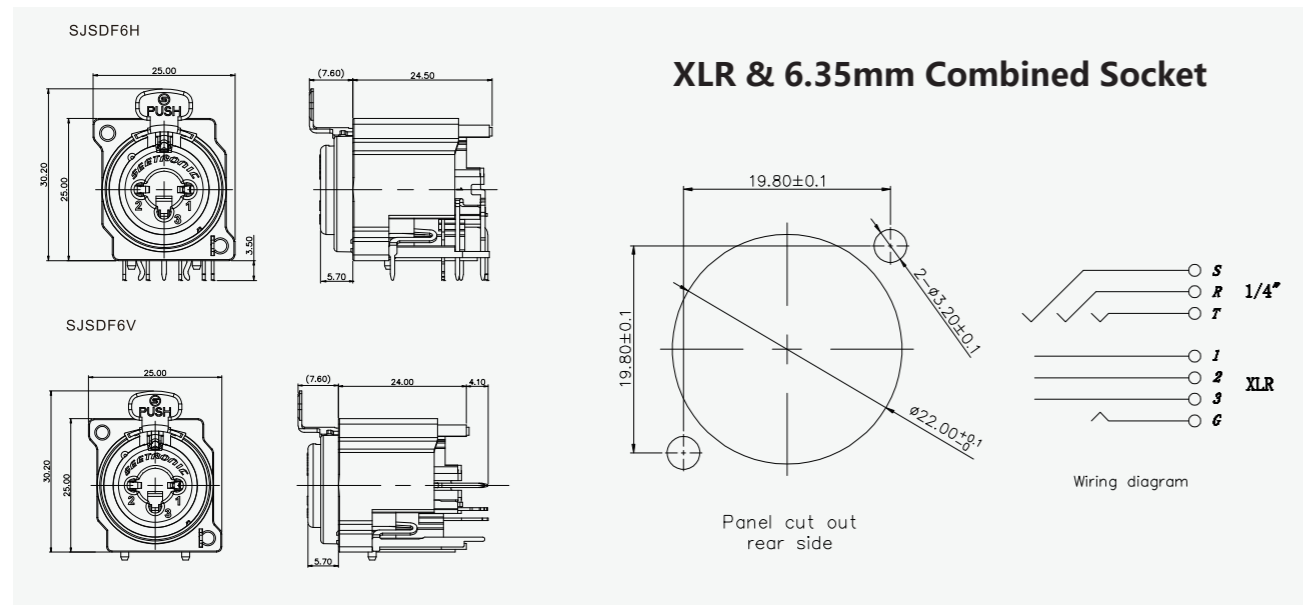
● SJSDF6H



● SJSDF6V

Features

- Hybrid panel socket combining 3-pin XLR jack and 1/4" stereo phone jack in one XLR housing
- Horizontal and vertical mounting panels
- Install from the rear of the panel
- Saves space, cost-effective and simplify PCB design



Product Model	Description
SJSDF6H	Combined 3-pole XLR female socket and 1/4" stereo jack, horizontal PCB mount
SJSDF6V	Combined 3-pole XLR female socket and 1/4" stereo jack, vertical PCB mount



Back View



● SCWF3



● SCWM3



● SCWF4-B



● SCWM4-B



● SCWF5



● SCWM5

Product Model	Description
SCWF3	3-core IP65 XLR female plug, pearl chrome housing, gold contacts
SCWF3-B	3-core IP65 XLR female plug, black housing, gold contacts
SCWM3	3-core IP65 XLR male plug, pearl chrome housing, gold contacts
SCWM3-B	3-core IP65 XLR male plug, black housing, gold contacts
SCWF4	4-core IP65 XLR female plug, pearl chrome housing, gold contacts
SCWF4-B	4-core IP65 XLR female plug, black housing, gold contacts
SCWM4	4-core IP65 XLR male plug, pearl chrome housing, gold contacts
SCWM4-B	4-core IP65 XLR male plug, black housing, gold contacts
SCWF5	5-core IP65 XLR female plug, pearl chrome housing, gold contacts
SCWF5-B	5-core IP65 XLR female plug, black housing, gold contacts
SCWM5	5-core IP65 XLR male plug, pearl chrome housing, gold contacts
SCWM5-B	5-core IP65 XLR male plug, black housing, gold contacts



Product Application 1



Product Application 2

Features

- Waterproof IP65 rating XLR plug series for harsh outdoor environment
- Rugged zinc die-cast housing for long life and high reliability
- The metal housing is designed with internal threads to ensure that it can withstand gravity under any site conditions
- The boot is equipped with a polyurethane sealing sleeve to prevent the cable from being affected by bending pressure to the greatest extent.

Features

- Industry's first waterproof XLR socket with IP65 waterproof rating
- Air-proof treatment at the rear to prevent moisture from entering inside the equipment
- D-shape metal housing with industry D-type installation dimensions provides installation compatibility
- Install on the front of the panel
- Solve to the fullest degree the fast connection requirements of the DMX lighting industry in outdoor conditions

Product Model Description

Product Model	Description
J3F2C-W	3-pin IP65 XLR male socket, peark chrome housing, gold contacts
J3F2C-W-B	3-pin IP65 XLR male socket, black housing, gold contacts
K3F2C-W	3-pin IP65 XLR female socket, pearl chrome housing, gold contacts
K3F2C-W-B	3-pin IP65 XLR female socket, black housing, gold contacts
J4F2C-W	4-pin IP65 XLR male socket, peark chrome housing, gold contacts
J4F2C-W-B	4-pin IP65 XLR male socket, black housing, gold contacts
K4F2C-W	4-pin IP65 XLR female socket, pearl chrome housing, gold contacts
K4F2C-W-B	4-pin IP65 XLR female socket, black housing, gold contacts
J5F2C-W	5-pin IP65 XLR male socket, peark chrome housing, gold contacts
J5F2C-W-B	5-pin IP65 XLR male socket, black housing, gold contacts
K5F2C-W	5-pin IP65 XLR female socket, pearl chrome housing, gold contacts
K5F2C-W-B	5-pin IP65 XLR female socket, black housing, gold contacts



● J3F2C-W

● K3F2C-W-B

Features

- Industry's first waterproof XLR input-output combined socket with IP65 rating
- Air-proof treatment at the rear to prevent moisture from entering inside the equipment
- D-shape metal housing with industry D-type installation dimensions provides installation
- Install on the front of the panel
- Sealed with rubber cover provides waterproof and dust proof protection
- Solve to the fullest degree the fast connection requirements of the DMX lighting industry in outdoor conditions for signal input and output

Product Model Description

Product Model	Description
C3F2C-W	3-pin IP65 XLR combined male-female socket, pearl chrome housing, gold contact
C3F2C-W-B	3-pin IP65 XLR combined male-female socket, black housing, gold contact
C4F2C-W	4-pin IP65 XLR combined male-female socket, pearl chrome housing, gold contact
C4F2C-W-B	4-pin IP65 XLR combined male-female socket, black housing, gold contact
C5F2C-W	5-pin IP65 XLR combined male-female socket, pearl chrome housing, gold contact
C5F2C-W-B	5-pin IP65 XLR combined male-female socket, black housing, gold contact



● C4F2C-W



● C4F2C-W-B



NEW PRODUCT | OPTICAL FIBER SERIES



Optical Fiber Plug & Socket

SEETRONIC



● SO2M

Features

- Rugged and reliable dual-channel fiber optic plug with metal housing
- Reliable push-pull key locking mechanism
- IP65 protection rating for electrical connections in outdoor conditions
- Match with SO2DF or standard LC fiber optic connectors
- Optional 4-channel signal
- The plug is pre-assembled with the fiber optic cable and no separate connector will be provided. Fiber optic cables are available in single-mode and multimode with different lengths and packaging options.

Product Model	Description
SOM-SOM-2CH-SM-***	LC/PC armoured fiber optic cable plug, 2-channel, single G657A2, TPU cable jacket
SOM-SOM-2CH-OM3-***	LC/PC armoured fiber optic cable plug, 2-channel, multi-mode OM3, TPU cable jacket
SOM-SOM-2CH-OM4-***	LC/PC armoured fiber optic cable plug, 2-channel, multi-mode OM4, TPU cable jacket
SOM-SOM-4CH-SM-***	LC/PC armoured fiber optic cable plug, 4-channel, single G657A2, TPU cable jacket
SOM-SOM-4CH-OM3-***	LC/PC armoured fiber optic cable plug, 4-channel, multi-mode OM3, TPU cable jacket
SOM-SOM-4CH-OM4-***	LC/PC armoured fiber optic cable plug, 4-channel, multi-mode OM4, TPU cable jacket
SOM-SOM-6CH-SM-***	LC/PC armoured fiber optic cable plug, 6-channel, single G657A2, TPU cable jacket
SOM-SOM-6CH-OM3-***	LC/PC armoured fiber optic cable plug, 6-channel, multi-mode OM3, TPU cable jacket
SOM-SOM-6CH-OM4-***	LC/PC armoured fiber optic cable plug, 6-channel, multi-mode OM4, TPU cable jacket
SOM-SOM-8CH-SM-***	LC/PC armoured fiber optic cable plug, 8-channel, single G657A2, TPU cable jacket
SOM-SOM-8CH-OM3-***	LC/PC armoured fiber optic cable plug, 8-channel, multi-mode OM3, TPU cable jacket
SOM-SOM-8CH-OM4-***	LC/PC armoured fiber optic cable plug, 8-channel, multi-mode OM4, TPU cable jacket

■ Refer above models “***” indicates cable length



● SO2DF



● SO2DFS



● SO2DFF*

Features

- Rugged and reliable dual-channel fiber optic sockets
- Feed-through design with automatic sealing cover
- Silicone rubber padded cover provides protection against dust and dirt for fiber optic connections
- IP65 protection rating for electrical connections in outdoor conditions
- SO2M or standard LC connectors can be connected to the front end and standard LC connectors can be connected to the rear end for easy installation

Product Model	Description
SO2DF	Dual-channel LC fiber optic feed-through socket, 4- solder type contact, black housing
SO2DFS	Dual-channel LC fiber optic feed-through socket, 4- solder type contact, nickel housing
SO2DFF*	Feed-through fiber optic coupler, SO2M at both ends, outdoor use, single and multi-mode optional

Assembled Optical Fiber Cables

SEETRONIC



● SOM-SOM-*CH-SM-***-R1



● SOM-SOM-*CH-OM3-***-R2



● SOM-SOM-*CH-OM4-***-R3

■ Refer above models, “***” indicates the length

Features

- Portable and durable cable drum
- Simple and reliable compression-resistant and anti-drop structure, detachable extension ring
- Plastic housing, small size and light weight
- Can be customized according to customer needs

Product Model Guide

SOM-SOM-*CH-SM-***-R1

Packing: R(cable drum), OD: R1 - 235mm R2 - 310mm R3 - 380mm

Cable Length: 1m, 2m, 10.5m

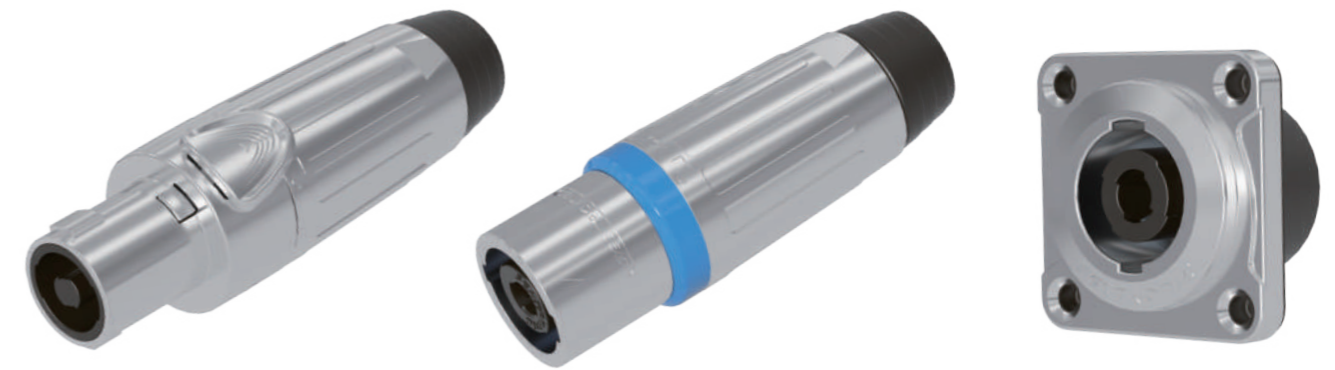
Fiber Mode: SM (PC Head) SMA (APC Head), OM2, OM3, OM4

No. of Channels: 2CH, 4CH, 6CH, 8CH

Connector 1: SO2M, LC, SC, FC, ST, MPO

Connector 2: SO2M, LC, SC, FC, ST, MPO

Product Model	Description
R1	R1, cable drum OD 235mm, suitable cable length ≤100 m
R2	R2, cable drum OD 310mm, suitable cable length 100~220 m
R3	R3, cable drum OD 380mm, suitable cable length 220~400 m



● SLDF4

● SLDM4

● SLDDM4

Features

- 4-pole loudspeaker connectors with nickel plated housing
- Rugged all-metal housing suitable for use in any demanding environments
- Sealing liners provides water resistance when installed
- Simple with extremely precise locking system

SLDF4 matched with SLDM4 for audio cable connection.



Product Model	Description
SLDF4	4-pole female cable connector, nickel housing, cable conductor $\leq 6\text{mm}^2$ (AWG10), 30A rms
SLDF4-BC	4-pole female cable connector, black housing, cable conductor $\leq 6\text{mm}^2$ (AWG10), 30A rms
SLDM4	4-pole male cable connector, nickel housing, cable conductor $\leq 6\text{mm}^2$ (AWG10), 30A rms
SLDM4-BC	4-pole male cable connector, black housing, cable conductor $\leq 6\text{mm}^2$ (AWG10), 30A rms
SLDDM4	4-pole chassis connector, nickel housing, solder or 1/4" flat tabs, 30A rms
SLDDM4-BC	4-pole chassis connector, black housing, solder or 1/4" flat tabs, 30A rms



● ML4FC-X



● SL4FX-N



● SL4MP

Features

- 4-pole plastic loudspeaker connectors suitable for various amplifier and PA applications
- Easy to assemble consisting of 3 parts and improved grip on latch for easy operation
- Metal insert on the socket with accurate twist lock latch system and air tight design
- High impact plastic materials, durable and reliable



Allen socket screws, solder-free design



Product Model	Description
ML4FC-X	4-pole cable connector, 30A rms, cable OD 6-15 mm
SL4FX-N	4-pole cable connector, 40A rms, cable OD 7-14.5 mm
SL4MP	4-pole chassis connector, D-size black plastic flange, 30A rms



1/4" Plugs

SEETRONIC



Features

- Exquisite design with fine surface treatment for convenient handling and precision machined one piece contact without rivets
- Applicable to all connectivity needs for stage and patch boxes, amplifiers, loudspeakers and sound consoles
- 1/4" professional plug with chuck type sleeve for reliable cable retention

Product Model	Description
MP2X	1/4" mono plug, pearl chrome housing, nickel contact, cable OD 4-7 mm
MP2X-B	1/4" mono plug, black chrome housing, nickel contact, cable OD 4-7 mm
MP2X-G	1/4" mono plug, pearl chrome housing, gold contact, cable OD 4-7 mm
MP2X-BG	1/4" mono plug, black chrome housing, gold contact, cable OD 4-7 mm
MP3X	1/4" stereo plug, pearl chrome housing, nickel contact, cable OD 4-7 mm
MP3X-B	1/4" stereo plug, black chrome housing, nickel contact, cable OD 4-7 mm
MP3X-G	1/4" stereo plug, pearl chrome housing, gold contact, cable OD 4-7 mm
MP3X-BG	1/4" stereo plug, black chrome housing, gold contact, cable OD 4-7 mm



* GY-Gray BK-Black RD-Red BN-Brown OG-Orange PU-Purple YE-Yellow BU-Blue GN-Green WH-White

Product Model	Description
MP2RX	1/4" mono right-angle plug, pearl chrome housing, nickel contact, cable OD 4-7 mm
MP2RX-B	1/4" mono right-angle plug, black chrome housing, nickel contact, cable OD 4-7 mm
MP2RX-G	1/4" mono right-angle plug, pearl chrome housing, gold contact, cable OD 4-7 mm
MP2RX-BG	1/4" mono right-angle plug, black chrome housing, gold contact, cable OD 4-7 mm
MP3RX	1/4" stereo right-angle plug, pearl chrome housing, nickel contact, cable OD 4-7 mm
MP3RX-B	1/4" stereo right-angle plug, black chrome housing, nickel contact, cable OD 4-7 mm
MP3RX-G	1/4" stereo right-angle plug, pearl chrome housing, gold contact, cable OD 4-7 mm
MP3RX-BG	1/4" stereo right-angle plug, black chrome housing, gold contact, cable OD 4-7 mm



* GY-Gray BK-Black RD-Red BN-Brown OG-Orange PU-Purple YE-Yellow BU-Blue GN-Green WH-White

3.5mm Plugs

SEETRONIC



Product Model	Description
MTP3C	3.5mm stereo slim plug, pearl chrome housing, nickel contact, cable OD 3.5-6.5 mm
MTP3C-B	3.5mm stereo slim plug, black chrome housing, nickel contact, cable OD 3.5-6.5 mm
MTP3C-G	3.5mm stereo slim plug, pearl chrome housing, gold contact, cable OD 3.5-6.5 mm
MTP3C-BG	3.5mm stereo slim plug, black chrome housing, gold contact, cable OD 3.5-6.5 mm
M2TP3C	3.5mm stereo slim plug, pearl chrome housing, nickel contact, cable OD 2-4.5 mm
M2TP3C-B	3.5mm stereo slim plug, black chrome housing, nickel contact, cable OD 2-4.5 mm
M2TP3C-G	3.5mm stereo slim plug, pearl chrome housing, gold contact, cable OD 2-4.5 mm
M2TP3C-BG	3.5mm stereo slim plug, black chrome housing, gold contact, cable OD 2-4.5 mm
ST231L	3.5mm stereo slim plug, nickel housing, nickel contact, cable OD 2-6 mm
ST231L-BG	3.5mm stereo slim plug, black housing, gold contact, cable OD 2-6 mm

Features

- 3.5mm professional slim plug with chuck type strain relief verified countless times
- Exquisite design with fine surface treatment and precision machined one piece contact without rivets
- Compact design, easy to use and tailored for professional headphones
- Colored boots available



* GY-Gray BK-Black RD-Red BN-Brown OG-Orange PU-Purple YE-Yellow BU-Blue GN-Green WH-White



● ST225

Features

- 1/4" professional plug with chuck-type strain relief verified countless times
- Exquisite design with fine surface treatment and precision machined one piece contact without rivets
- Applicable to all connectivity needs for stage and patch boxes, amplifiers, loudspeakers and sound consoles

Product Model	Description
ST225	1/4" mono plug, pearl chrome housing, nickel contact, cable OD ≤ 10mm



RCA Plug and Socket Connectors



Product Model	Description
MT380	RCA male plug, black housing, gold contacts, cable OD 3.5-6.5 mm
MT380-2*	RCA male plug, black housing, gold contacts, cable OD 3.5-6.5 mm, red boot
MT390	RCA female plug, black housing, gold contacts, cable OD 3.5-6.5 mm

Features

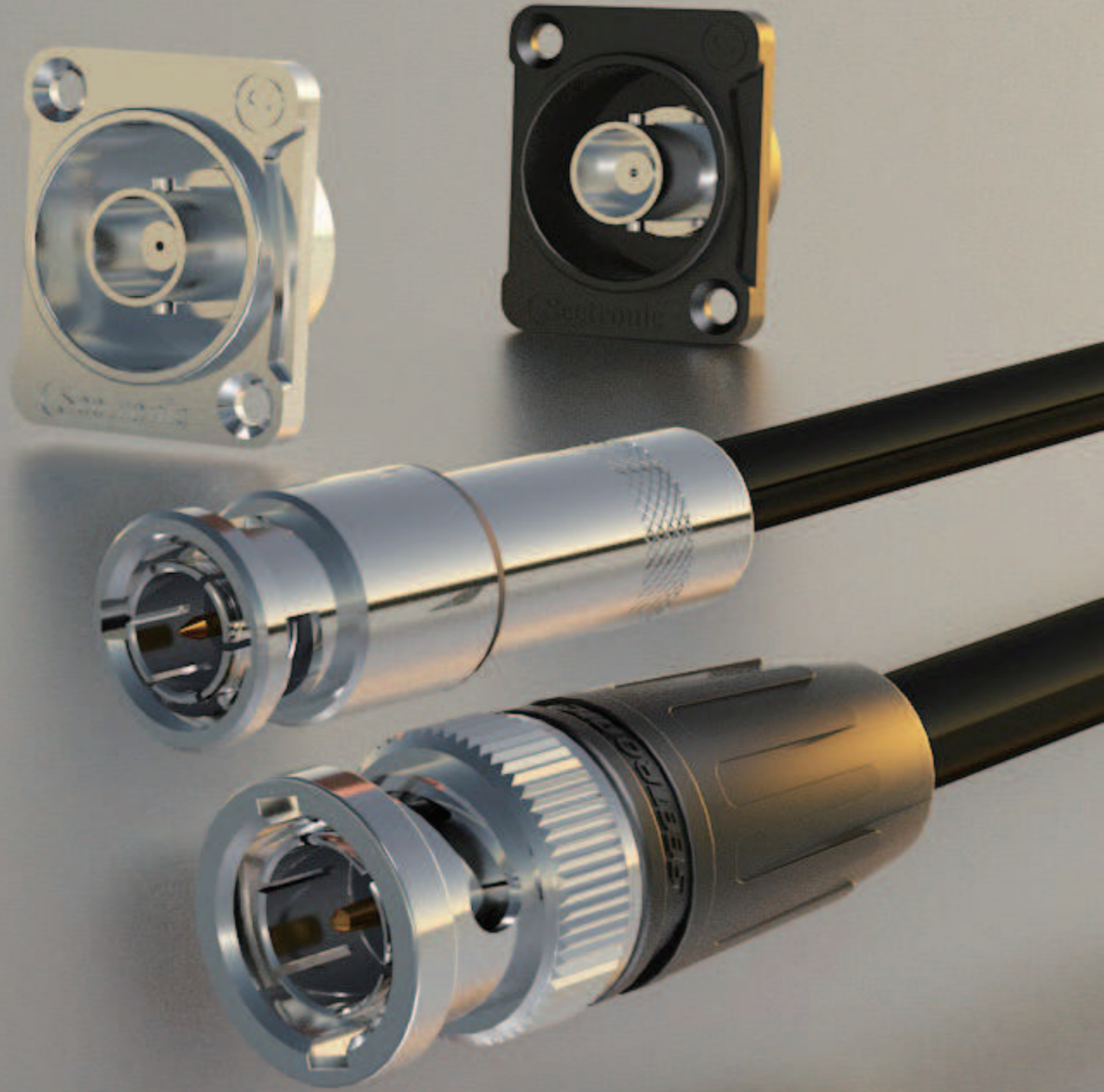
- Professional RCA plug
- Reliable transmission of digital audio signals and analog video signals
- Good contact performance and stable transmission signal
- High-quality structural design and sophisticated materials ensure that the mating and unplugging life ≥ 2000 times



Product Model	Description
MF2D	RCA female socket, standard D-type nickel housing, gold contact
MF2D-B	RCA female socket, standard D-type black housing, gold contact
TX-Z1	RCA female socket, gold contact, rear panel mounted

Features

- Professional RCA socket for reliable transmission of digital audio signals and analog video signals
- Good contact performance provides stable signal transmission and no interfering noise
- D-size housing with industry standard D-type mounting dimensions provides mounting compatibility



75Ω UHD BNC Connectors



● SEBNCM-75GF7



● SEBNCM-75PJ9



● SBB75DFGX



● SBB75DFGX-B

Product Model	Inner Conductor OD (mm)	Insulation	Cable OD (mm)	Pin Crimp (mm)	Hexagonal Crimp (mm)
SEBNCM-75GF7	< 0.7	< 3.1	< 4.7	1.07	5.00
SEBNCM-75PJ9	< 0.9	< 3.8	< 6.3	1.07	6.47
SEBNCM-75PL9	< 0.9	< 3.8	< 6.3	1.07	6.47
SBB75DFGX	12G UHD BNC socket, D-size chrome housing, soldered, grounded				
SBB75DFGX-B	12G UHD BNC socket, D-size black housing, non-soldered, ungrounded				

Features: BNC Plug Connectors

- This BNC connector designed with reduced outer diameter pin and insulation features low return loss and real 75Ω characteristics impedance which is suitable for UHD signal transmission
- Easy to use Bayonet locking and unlocking type
- Gold plated pin ensures that the signal is stable after plugging and unplugging
- Fully compatible with conventional BNC socket connectors

Features: BNC Socket Connectors

- Provides low return loss at high frequencies for ultra-high-definition (UHD) video signal transmission
- True 75Ω impedance design meets stringent UHD requirements
- Standard D-size housing, flush mounted and protected from damage
- Fully compatible with conventional BNC plug connectors
- The ungrounded UHD BNC socket model is SBB75DFGX-B and the grounded UHD BNC socket model is SBB75DFGX



	Product Model	Pin Crimp (mm)	Hexagonal Crimp (mm)
Belden¹			
Belden 1855ENH	SEBNCM-75GF7	1.07	5.00
Belden 1426A, 1505A (ANH)	SEBNCM-75PL9	1.07	6.47
Belden 1505F	SEBNCM-75PJ9	1.07	6.47
Belden 8242F	SEBNCM-75PL9	1.07	6.47
Canare²			
Canare L-2.5CHWS	SEBNCM-75GF7	1.07	5.00
Canare L-3.3CUHD	SEBNCM-75PL9	1.07	6.47
Canare L-4CFB	SEBNCM-75PL9	1.07	6.47
KLOTZ³			
KLOTZ V06/28, V062SH, VMXx75Y	SEBNCM-75GF7	1.07	5.00
KLOTZ V08/37H, VD083SH	SEBNCM-75PL9	1.07	6.47
KLOTZ V083LP 0.8/3.7DZ	SEBNCM-75PJ9	1.07	6.47
SOMMER⁴			
SOMMER 600-0101M	SEBNCM-75GF7	1.07	5.00
SOMMER 600-0104M	SEBNCM-75GF7	1.07	5.00
SOMMER 600-162(F), Vctor 0.8/3.7	SEBNCM-75PL9	1.07	6.47
SOMMER 600-0451	SEBNCM-75PL9	1.07	6.47
SOMMER 600-0621-05	SEBNCM-75GF7	1.07	5.00
SOMMER 600-0791	SEBNCM-75GF7	1.07	5.00
SOMMER 600-0851	SEBNCM-75GF7	1.07	5.00
SOMMER 600-0851-05	SEBNCM-75GF7	1.07	5.00
SOMMER 600-1451	SEBNCM-75GF7	1.07	5.00
SOMMER 600-2101	SEBNCM-75GF7	1.07	5.00
SOMMER 600-2231	SEBNCM-75PL9	1.07	6.47
SOMMER 600-0761	SEBNCM-75GF7	1.07	5.00

¹BELDEN is a registered trademark of Belden Inc.

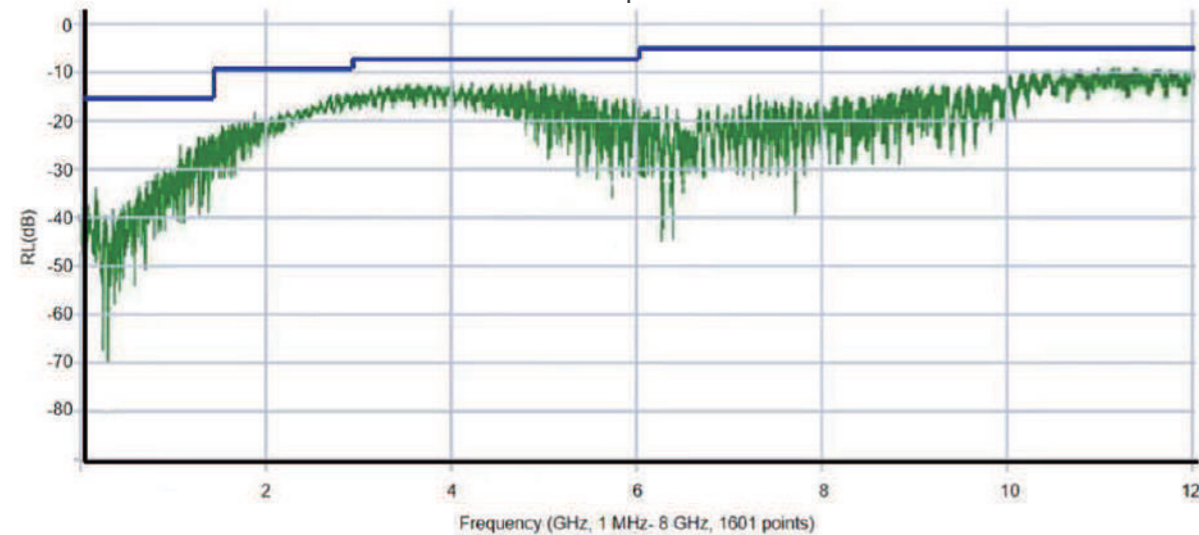
²Canare is a registered trademark of Canare Electric Co., Ltd.

³KLOTZ is a registered trademark of Klotz Audio Interface Systems A.I.S. GmbH

⁴SOMMER is a registered trademark of Sommer Cable GmbH

Test Report of Seetronic' s BNC UHD Connectors

The graph showing blue line is the industry standards and the green is the test data of Seetronic' s BNC UHD connectors which shows that our BNC connectors passed the standards.



● MBB75F

● MBB75DFG

MBB75F (Back)

MBB75DFG (Back)

Features

- Grounded HD BNC panel mount, D-type nickel-plated housing
- True 75Ω design BNC which meets the strict requirement of HDTV/DVD
- Gold plated center contact pin ensures stable signal transmission even after long-term plugging and unplugging
- Standard D-shape with recess-mount which protects the socket from damage
- Widely used in radio frequency coaxial cable connection in the field of radio equipment and electronic instrument

Product Model	Description
MBB75F	True 75Ω BNC socket, D-shape nickel housing, gold contact, soldered
MBB75DFG	True 75Ω BNC socket, D-shape nickel housing, gold contact, feedthrough



Features

- Reliable and compact USB Type-C female to female connector
- High current capacity rated at 5A
- Dual 24P full port, Waterproof and airproof at the same time, waterproof IP65 rating
- Meets the standard USB 3.1

Product Model	Description
SCCMDF-01	USB 3.0 compact USB Type C female to female connector, dual 24P full port
SCCMDF-02	USB 3.0 compact USB Type C female to female connector, dual 24P full port, auto-flip cap



Features

- D-size metal housing with industry standard D-type installation dimension provides installation compatibility
- Suitable for the integration solution of easy network audio and video transmission of any digital TV and other video format including high-definition video (HDTV)
- Waterproof rubber cover included as standard, waterproof HDMI when used with CNAC-HDMI

Product Model	Description
SAUSB-W	USB transformer, Type A - Type B, D-shape nickel housing
SAUSB-W-B	USB transformer, Type A - Type B, D-shape nickel housing
SBUSB-W	USB transformer, Type B - Type A, D-shape nickel housing
SBUSB-W-B	USB transformer, Type B - Type A, D-shape nickel housing
MAUSB-W	USB transformer, Type A - Type B, standard 2.54mm 4P horn interface, D-shape nickel housing equipped with waterproof rubber cover, IP65 rating
MAUSB-W-B	USB transformer, Type A - Type B, standard 2.54mm 4P horn interface, D-shape black housing equipped with waterproof rubber cover, IP65 rating
SAHDMI-W	Standard HDMI, 1.3 adapter with 19-pin both ends, D-shape nickel housing, waterproof when mated CNAC-HDMI
SAHDMI-W-B	Standard HDMI, 1.3 adapter with 19-pin both ends, D-shape black housing, waterproof when mated CNAC



Metal Adapters



● MA3M5F

● MA5M3F

● MA3M5M

● MA3MJ3



● MA3MP2

● MA3MP3

● MA3MRF

● MA3MRM

Features

- Circular metal adapters
- Rugged zinc die-cast housing provides long life and high reliability
- Multi-functional adapters which meet the interface requirements of different connections

Product Model	Description
MA3M3M	Circular metal adapter, 3-pin XLR male - 3-pin XLR male
MA3M5F	Circular metal adapter, 3-pin XLR male - 5-pin XLR female
MA3M5M	Circular metal adapter, 3-pin XLR male - 5-pin XLR male
MA3MJ3	Circular metal adapter, 3-pin XLR male - 1/4" jack female
MA3MP2	Circular metal adapter, 3-pin XLR male - 1/4" mono plug
MA3MP3	Circular metal adapter, 3-pin XLR male - 1/4" stereo plug
MA3MRF	Circular metal adapter, 3-pin XLR male - RCA female socket
MA3MRM	Circular metal adapter, 3-pin XLR male - RCA male plug

Metal Adapters

SEETRONIC



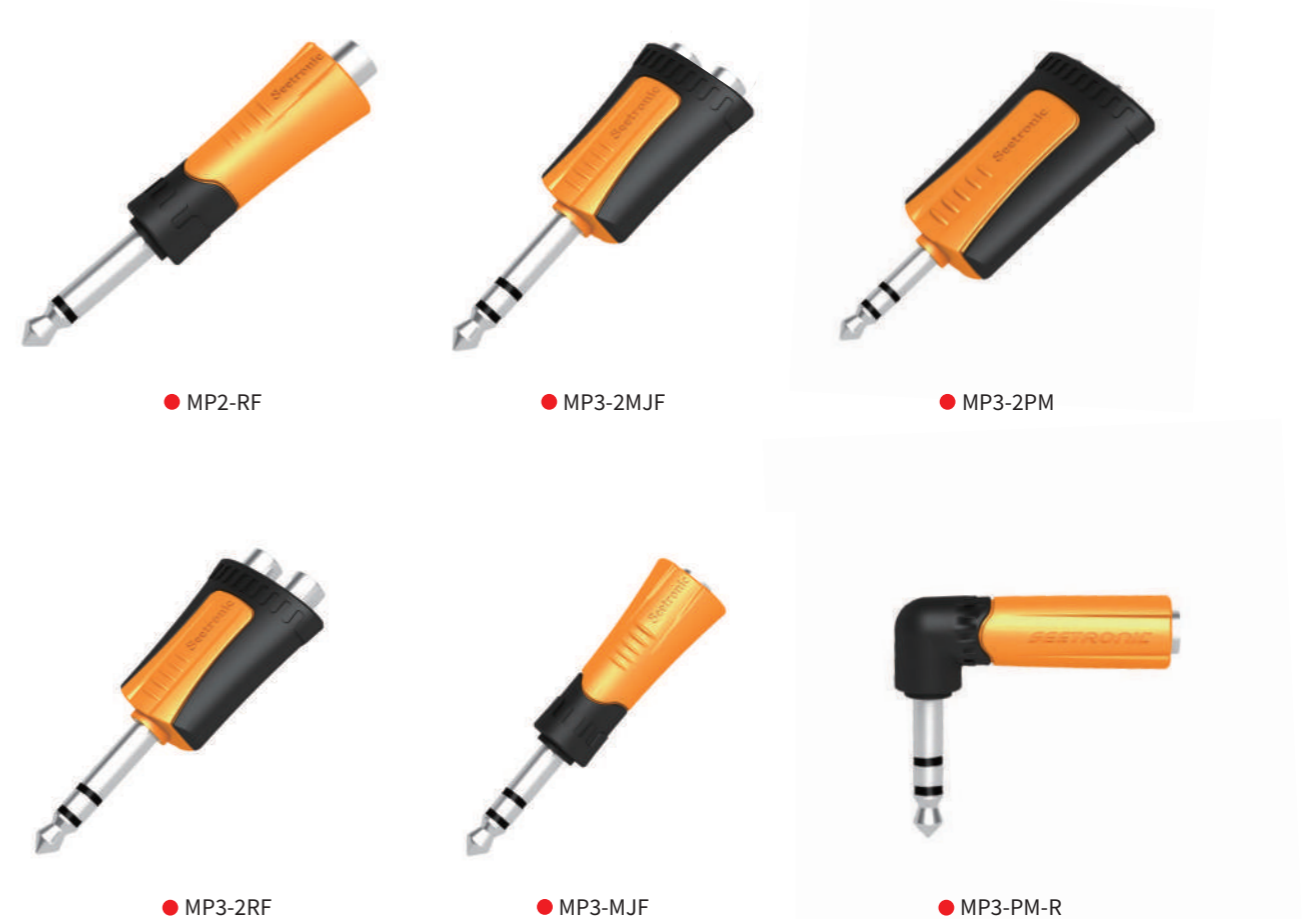
Features

- Circular metal adapters
- Rugged zinc die-cast housing provides long life and high reliability
- Multi-functional adapters which meet the interface requirements of different connections

Product Model	Description
MA3F3F	Circular metal adapter, 3-pin XLR female - 3-pin XLR female
MA5F3F	Circular metal adapter, 5-pin XLR female - 3-pin XLR female
MA5M3F	Circular metal adapter, 5-pin XLR male - 3-pin XLR female
MA3FJ3	Circular metal adapter, 3-pin XLR female - 1/4" jack female
MA3FP2	Circular metal adapter, 3-pin XLR female - 1/4" mono plug
MA3FP3	Circular metal adapter, 3-pin XLR female - 1/4" stereo plug
MA3FRF	Circular metal adapter, 3-pin XLR female - RCA female socket
MA3FRM	Circular metal adapter, 3-pin XLR female - RCA male plug

Plastic Adapters

SEETRONIC



Features

- Multi-functional adapters which meet the interface requirements of different connections
- Professional look and durable plastic housing

Product Model	Description
MP2-RF	Plastic housing adapter, 1/4" mono plug - RCA female socket
MP3-2MJF	Plastic housing adapter, 1/4" stereo plug - 2 x 3.5mm jack
MP3-2PM	Plastic housing adapter, 1/4" stereo plug - 2 x 1/4" jack
MP3-2RF	Plastic housing adapter, 1/4" stereo plug - 2 x RCA female socket
MP3-MJF	Plastic housing adapter, 1/4" stereo plug - 3.5mm jack
MP3-PM-R	Plastic housing adapter, 1/4" stereo plug - 1/4" right-angle jack



● MMJ3-2MJF



● MMJ3-2PM



● MMJ3-2RF



● MMJ3-PM-R



● MMJ3-MJF-R



● MMJ3-PM-R



● MRM-2RF

Features

- Multi-functional adapters which meet the interface requirements of different connections
- Professional look and durable plastic housing

Product Model	Description
MMJ3-2MJF	Plastic housing adapter, 3.5mm stereo plug - 2 x 3.5mm jack
MMJ3-2PM	Plastic housing adapter, 3.5mm stereo plug - 2 x 1/4" jack
MMJ3-2RF	Plastic housing adapter, 3.5mm stereo plug - 2 x RCA female socket
MMJ3-PM	Plastic housing adapter, 3.5mm stereo plug - 1/4" jack
MMJ3-MJF-R	Plastic housing adapter, 3.5mm stereo plug - 3.5mm right-angle jack
MMJ3-PM-R	Plastic housing adapter, 3.5mm stereo plug - 1/4" right-angle jack
MRM-2RF	Plastic housing adapter, RCA male plug - 2 x RCA female socket